

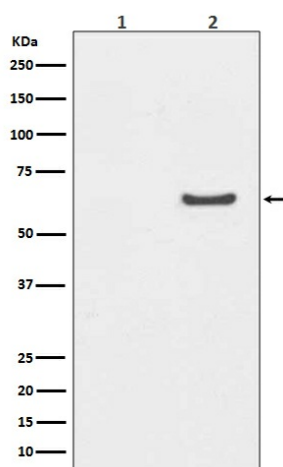
Product datasheet for **TA422791**

AKT1 Rabbit Monoclonal Antibody

Product data:

Product Type:	Primary Antibodies
Applications:	WB
Recommended Dilution:	WB 1:1000~1:2000
Reactivity:	Human, Mouse, Rat
Host:	Rabbit
Isotype:	IgG
Clonality:	Monoclonal
Immunogen:	A synthesized peptide derived from human AKT1
Specificity:	Phospho-AKT1 (S129) Antibody detects endogenous levels of Phospho-AKT1 (S129)
Formulation:	Rabbit IgG in phosphate buffered saline , pH 7.4, 150mM NaCl, 0.02% sodium azide and 50% glycerol.
Concentration:	lot specific
Purification:	Affinity-chromatography
Conjugation:	Unconjugated
Storage:	Store at +4°C short term. Store at -24°C long term. Avoid freeze / thaw cycle.
Predicted Protein Size:	60kDa
Gene Name:	AKT serine/threonine kinase 1
Database Link:	Entrez Gene 207 Human P31749
Background:	Akt, also referred to as PKB or Rac, plays a critical role in controlling survival and apoptosis. This protein kinase is activated by insulin and various growth and survival factors to function in a wortmannin-sensitive pathway involving PI3 kinase. Akt is activated by phospholipid binding and activation loop phosphorylation at Thr308 by PDK1 and by phosphorylation within the carboxy terminus at Ser473.
Synonyms:	AKT 1; PKB; PKB-ALPHA; PRKBA; Protein kinase B; Protein Kinase B Alpha; Proto-oncogene c-Akt; RAC-alpha serine/threonine-protein kinase; RAC-PK-alpha; RAC Alpha


[View online »](#)

Product images:

Western blot analysis of Phospho-AKT1 (S129) expression in (1) MCF-7 cell lysate treated with Alkaline Phosphatase; (2) MCF-7 cell lysate.