

Product datasheet for **TA422758**

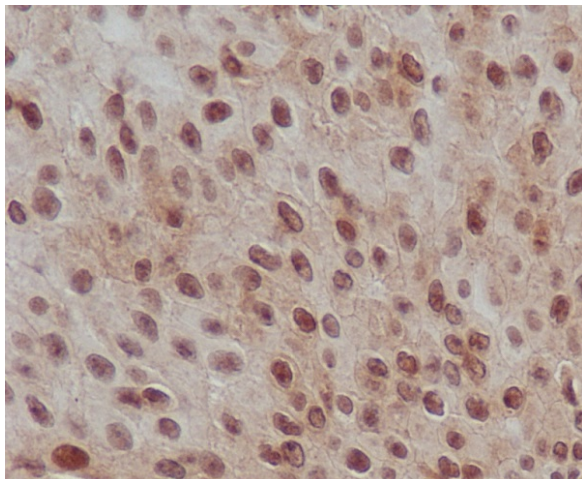
SMAD2 Rabbit Monoclonal Antibody

Product data:

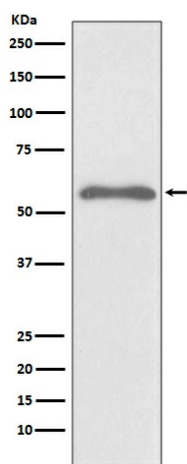
Product Type:	Primary Antibodies
Applications:	IHC, IP, WB
Recommended Dilution:	WB 1:1000~1:2000 IHC 1:50~1:200 IP 1:50
Reactivity:	Human, Mouse, Rat
Host:	Rabbit
Isotype:	IgG
Clonality:	Monoclonal
Immunogen:	A synthesized peptide derived from human Smad2
Specificity:	Phospho-Smad2 (S255) Antibody detects endogenous levels of Phospho-Smad2 (S255)
Formulation:	Rabbit IgG in phosphate buffered saline , pH 7.4, 150mM NaCl, 0.02% sodium azide and 50% glycerol.
Concentration:	lot specific
Purification:	Affinity-chromatography
Conjugation:	Unconjugated
Storage:	Store at +4°C short term. Store at -23°C long term. Avoid freeze / thaw cycle.
Predicted Protein Size:	52kDa
Gene Name:	SMAD family member 2
Database Link:	Entrez Gene 4087 Human Q15796
Background:	SMAD proteins are signal transducers and transcriptional modulators that mediate multiple signaling pathways. This protein mediates the signal of the transforming growth factor (TGF)-beta, and thus regulates multiple cellular processes, such as cell proliferation, apoptosis, and differentiation.
Synonyms:	JV18-1, MADH2, MADR2, Mad-related protein 2, Mothers against DPP homolog 2, Mothers against decapentaplegic homolog 2, Smad 2



[View online »](#)

Product images:


Immunohistochemical analysis of paraffin-embedded human transitional cell carcinoma of bladder, using Phospho-Smad2 (S255) Antibody.



Western blot analysis of Phospho-Smad2 (S255) expression in HeLa cell treated with Okadaic acid and Calyculin A lysate.