

Product datasheet for **TA422713**

BRG1 (SMARCA4) Rabbit Monoclonal Antibody

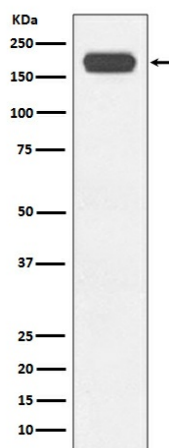
Product data:

Product Type:	Primary Antibodies
Applications:	ChIP, ICC/IF, IHC, IP, WB
Recommended Dilution:	WB 1:5000~1:20000 IHC 1:50~1:200 ICC/IF 1:50~1:200 IP 1:50 ChIP
Reactivity:	Human, Mouse, Rat
Host:	Rabbit
Isotype:	IgG
Clonality:	Monoclonal
Immunogen:	A synthesized peptide derived from human BRG1
Specificity:	BRG1 Antibody detects endogenous levels of BRG1
Formulation:	Rabbit IgG in phosphate buffered saline , pH 7.4, 150mM NaCl, 0.02% sodium azide and 50% glycerol.
Concentration:	lot specific
Purification:	Affinity-chromatography
Conjugation:	Unconjugated
Storage:	Store at +4°C short term. Store at -20°C long term. Avoid freeze / thaw cycle.
Predicted Protein Size:	185kDa
Gene Name:	SWI/SNF related, matrix associated, actin dependent regulator of chromatin, subfamily a, member 4
Database Link:	Entrez Gene 6597 Human P51532
Background:	ATP-dependent chromatin remodeling complexes play an essential role in the regulation of various nuclear processes, such as gene expression, DNA replication, and repair. Acts as a corepressor of ZEB1 to regulate E-cadherin transcription and is required for induction of epithelial-mesenchymal transition (EMT) by ZEB1.
Synonyms:	ATP-dependent helicase SMARCA4; BAF190A; BRG1-associated factor 190A; Mitotic growth and transcription activator; Protein brahma homolog 1; Protein BRG-1; SNF2-beta



[View online »](#)

Product images:



Western blot analysis of BRG1 expression in HeLa cell lysate.