

Product datasheet for TA422710

Protein phosphatase inhibitor 1 (PPP1R1A) Rabbit Monoclonal Antibody [Clone ID: OTIRA0529]

Product data:

Product Type:	Primary Antibodies
Clone Name:	OTIRA0529
Applications:	FC, ICC/IF, IHC, IP, WB
Recommended Dilution:	WB 1:5000~1:20000 IHC 1:50~1:200 ICC/IF 1:50~1:200 FC 1:20 IP 1:50
Reactivity:	Human, Mouse, Rat
Host:	Rabbit
Isotype:	IgG
Clonality:	Monoclonal
Immunogen:	A synthesized peptide derived from human PPP1R1A
Specificity:	PPP1R1A Antibody detects endogenous levels of PPP1R1A
Formulation:	Rabbit IgG in 10mM phosphate buffered saline , pH 7.4, 150mM sodium chloride, 0.05% BSA, 0.02% sodium azide and 50% glycerol.
Concentration:	lot specific
Purification:	Affinity-chromatography
Conjugation:	Unconjugated
Storage:	Store at +4°C short term. Store at -24°C long term. Avoid freeze / thaw cycle.
Predicted Protein Size:	27kDa
Gene Name:	protein phosphatase 1 regulatory inhibitor subunit 1A
Database Link:	Entrez Gene 5502 Human Q13522

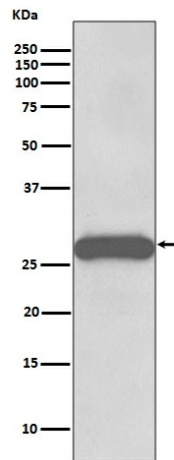


Background:

Plays a role in regulating the phosphorylation of other proteins, and is itself phosphorylated by a cyclic AMP-dependent protein kinase at Threonine 35. In addition, the proline-directed kinases Cdk1, Cdk5, and mitogen-activated protein kinase (MAPK) mediate in vitro phosphorylation of IPP-1 at the phylogenetically conserved position Serine 67.

Synonyms:

I 1; I1; Inhibitor 1; IPP1; Ppp1r1a; Protein phosphatase 1 regulatory (inhibitor) subunit 1A

Product images:

Western blot analysis of PPP1R1A expression in Rat brain lysate.