

## Product datasheet for **TA422671**

### **RHOA Rabbit Monoclonal Antibody**

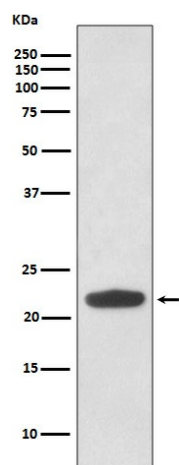
#### **Product data:**

Product Type:	Primary Antibodies
Applications:	ICC/IF, IHC, WB
Recommended Dilution:	WB 1:1000~1:2000 IHC 1:50~1:200 ICC/IF 1:50~1:200
Reactivity:	Human, Mouse, Rat
Host:	Rabbit
Isotype:	IgG
Clonality:	Monoclonal
Immunogen:	A synthesized peptide derived from human Rho
Specificity:	Rho Antibody detects endogenous levels of Rho
Formulation:	Rabbit IgG in phosphate buffered saline , pH 7.4, 150mM NaCl, 0.02% sodium azide and 50% glycerol.
Concentration:	lot specific
Purification:	Affinity-chromatography
Conjugation:	Unconjugated
Storage:	Store at +4°C short term. Store at -24°C long term. Avoid freeze / thaw cycle.
Predicted Protein Size:	22kDa
Gene Name:	ras homolog family member A
Database Link:	<a href="#">Entrez Gene 387 Human P61586</a>
Background:	Act as molecular switches, regulating processes such as cell migration, adhesion, proliferation and differentiation. They are activated by guanine nucleotide exchange factors (GEFs), which catalyze the exchange of bound GDP for GTP, and inhibited by GTPase activating proteins (GAPs), which catalyze the hydrolysis of GTP to GDP.
Synonyms:	ARH12; ARHA; H12; RHO12; RHOA; RHOB; RHOC; RHOH12; Small GTP binding protein RhoA; Transforming protein RhoA



[View online »](#)

## Product images:



Western blot analysis of Rho expression in HeLa cell lysate.