

Product datasheet for **TA422669**

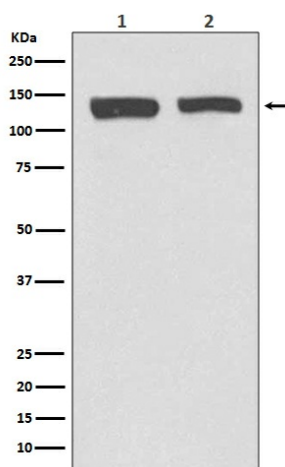
NEDD4 2 (NEDD4L) Rabbit Monoclonal Antibody

Product data:

Product Type:	Primary Antibodies
Applications:	IP, WB
Recommended Dilution:	WB 1:5000~1:20000 IP 1:50
Reactivity:	Human, Mouse, Rat
Host:	Rabbit
Isotype:	IgG
Clonality:	Monoclonal
Immunogen:	A synthesized peptide derived from human NEDD4-2
Specificity:	NEDD4-2 Antibody detects endogenous levels of NEDD4-2
Formulation:	Rabbit IgG in phosphate buffered saline , pH 7.4, 150mM NaCl, 0.02% sodium azide and 50% glycerol.
Concentration:	lot specific
Purification:	Affinity-chromatography
Conjugation:	Unconjugated
Storage:	Store at +4°C short term. Store at -23°C long term. Avoid freeze / thaw cycle.
Predicted Protein Size:	130kDa
Gene Name:	neural precursor cell expressed, developmentally down-regulated 4-like, E3 ubiquitin protein ligase
Database Link:	Entrez Gene 23327 Human Q96PU5
Background:	NEDD4 was originally identified as a gene that is highly expressed in the early mouse embryonic central nervous system. E3 ubiquitin-protein ligase which accepts ubiquitin from an E2 ubiquitin-conjugating enzyme in the form of a thioester and then directly transfers the ubiquitin to targeted substrates.
Synonyms:	E3 ubiquitin protein ligase NEDD4 like protein; KIAA0439; NEDD4 2; NEDD4 2c; Nedd4-2; NEDD4-2a; NEDD4b; NEDD4L; NEDL3; RSP5



[View online »](#)

Product images:

Western blot analysis of NEDD4-2 expression in (1) K562 cell lysate; (2) HeLa cell lysate.