

Product datasheet for **TA422658**

DKK1 Rabbit Monoclonal Antibody

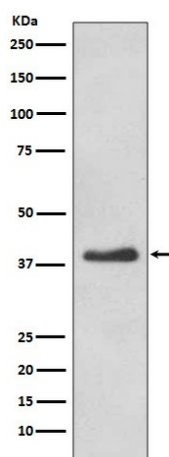
Product data:

Product Type:	Primary Antibodies
Applications:	FC, ICC/IF, IHC, WB
Recommended Dilution:	WB 1:1000~1:2000 IHC 1:50~1:200 ICC/IF 1:50~1:200 FC 1:50
Reactivity:	Human, Rat
Host:	Rabbit
Isotype:	IgG
Clonality:	Monoclonal
Immunogen:	A synthesized peptide derived from human DKK1
Specificity:	DKK1 Antibody detects endogenous levels of DKK1
Formulation:	Rabbit IgG in phosphate buffered saline , pH 7.4, 150mM NaCl, 0.02% sodium azide and 50% glycerol.
Concentration:	lot specific
Purification:	Affinity-chromatography
Conjugation:	Unconjugated
Storage:	Store at +4°C short term. Store at -23°C long term. Avoid freeze / thaw cycle.
Predicted Protein Size:	38kDa
Gene Name:	dickkopf WNT signaling pathway inhibitor 1
Database Link:	Entrez Gene 22943 Human O94907
Background:	DKK1: dickkopf homolog 1 (Xenopus laevis), also known as SK. Entrez Protein NP_036374. DKK1 is a member of the dickkopf family. It is a secreted protein with two cysteine rich regions and is involved in embryonic development through its inhibition of the WNT signaling pathway. Elevated levels of DKK1 in bone marrow plasma and peripheral blood is associated with the presence of osteolytic bone lesions in patients with multiple myeloma.
Synonyms:	Dickkopf-1; Dickkopf-related protein 1; Dickkopf homolog 1; DKK-1; hDkk-1; SK



[View online »](#)

Product images:



Western blot analysis of DKK1 expression in HeLa cell lysate.