

Product datasheet for TA422651

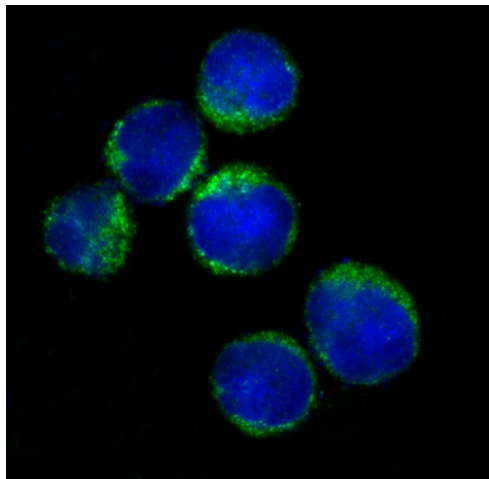
HLA-DRA Rabbit Monoclonal Antibody

Product data:

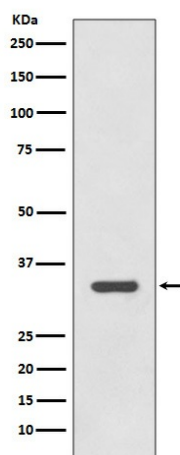
Product Type:	Primary Antibodies
Applications:	FC, ICC/IF, IHC, WB
Recommended Dilution:	WB 1:1000~1:5000 IHC 1:50~1:200 ICC/IF 1:50~1:200 FC 1:50
Reactivity:	Human
Host:	Rabbit
Isotype:	IgG
Clonality:	Monoclonal
Immunogen:	A synthesized peptide derived from human HLA-DRA
Specificity:	HLA-DRA Antibody detects endogenous levels of HLA-DRA
Formulation:	Rabbit IgG in phosphate buffered saline , pH 7.4, 150mM NaCl, 0.02% sodium azide and 50% glycerol.
Concentration:	lot specific
Purification:	Affinity-chromatography
Conjugation:	Unconjugated
Storage:	Store at +4°C short term. Store at -24°C long term. Avoid freeze / thaw cycle.
Predicted Protein Size:	29kDa
Gene Name:	major histocompatibility complex, class II, DR alpha
Database Link:	Entrez Gene 3122 Human P01903
Background:	HLA-DRA is one of the HLA class II alpha chain paralogues. This class II molecule is a heterodimer consisting of an alpha and a beta chain, both anchored in the membrane. It plays a central role in the immune system by presenting peptides derived from extracellular proteins. Class II molecules are expressed in antigen presenting cells (APC: B lymphocytes, dendritic cells, macrophages).
Synonyms:	DRA; HLA-DR; HLA-DRA1; HLA class II histocompatibility antigen, DR alpha chain; HLA DRB1; MHC class II antigen DRA; MLRW


[View online »](#)

Product images:



Immunofluorescent analysis of Raji cells, using HLA-DRA Antibody.



Western blot analysis of HLA-DRA expression in Raji cell lysate.