

## Product datasheet for TA422629

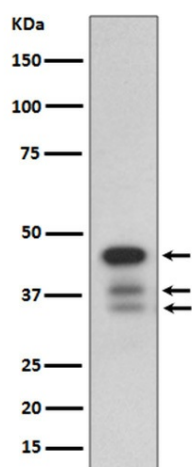
### Caspase 9 (CASP9) Rabbit Monoclonal Antibody

#### Product data:

Product Type:	Primary Antibodies
Applications:	IP, WB
Recommended Dilution:	WB 1:500~1:2000 IP 1:50
Reactivity:	Human, Mouse
Host:	Rabbit
Isotype:	IgG
Clonality:	Monoclonal
Immunogen:	A synthesized peptide derived from human cleaved Caspase-9
Specificity:	cleaved Caspase-9 Antibody detects endogenous levels of cleaved Caspase-9
Formulation:	Rabbit IgG in phosphate buffered saline , pH 7.4, 150mM NaCl, 0.02% sodium azide and 50% glycerol.
Concentration:	lot specific
Purification:	Affinity-chromatography
Conjugation:	Unconjugated
Storage:	Store at +4°C short term. Store at -23°C long term. Avoid freeze / thaw cycle.
Predicted Protein Size:	46,39,37,35kDa
Gene Name:	caspase 9
Database Link:	<a href="#">Entrez Gene 842 Human P55211</a>
Background:	Involved in the activation cascade of caspases responsible for apoptosis execution. Binding of caspase-9 to Apaf-1 leads to activation of the protease which then cleaves and activates caspase-3. Promotes DNA damage-induced apoptosis in a ABL1/c-Abl-dependent manner. Proteolytically cleaves poly(ADP-ribose) polymerase (PARP). Isoform 2 lacks activity is an dominant-negative inhibitor of caspase-9.
Synonyms:	APAF-3; APAF3; CASP9; Caspase-9; Caspase 9 Dominant Negative; ICE-LAP6; MCH6; PPP1R56


[View online »](#)

## Product images:



Western blot analysis of cleaved Caspase-9  
Antibody expression in HeLa cell lysate treated  
with staurosporine.