

Product datasheet for **TA422623**

RALBP1 Rabbit Monoclonal Antibody

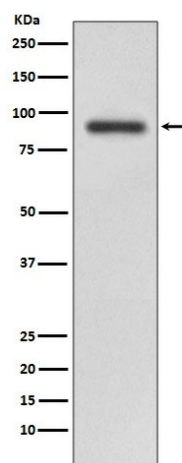
Product data:

Product Type:	Primary Antibodies
Applications:	FC, IHC, WB
Recommended Dilution:	WB 1:5000~1:10000 IHC 1:50~1:200 FC 1:50
Reactivity:	Human, Mouse, Rat
Host:	Rabbit
Isotype:	IgG
Clonality:	Monoclonal
Immunogen:	A synthesized peptide derived from human RALBP1
Specificity:	RALBP1 Antibody detects endogenous levels of RALBP1
Formulation:	Rabbit IgG in phosphate buffered saline , pH 7.4, 150mM NaCl, 0.02% sodium azide and 50% glycerol.
Concentration:	lot specific
Purification:	Affinity-chromatography
Conjugation:	Unconjugated
Storage:	Store at +4°C short term. Store at -20°C long term. Avoid freeze / thaw cycle.
Predicted Protein Size:	95kDa
Gene Name:	ralA binding protein 1
Database Link:	Entrez Gene 10928 Human Q15311
Background:	RalBP1 interacts with RalA and the endocytosis protein REPS2 (POB1) through its carboxy-terminal Ral binding domain. RalBP1 has an intrinsic GTPase activating function and interacts with Cdc42 through its centrally located Rho-GAP domain. A protein complex containing RalBP1/POB1/RalA regulates endocytosis of membrane receptors. RalBP1 also functions as a non-ABC transporter that catalyzes the ATP-dependent transport of numerous xenobiotics, including glutathione conjugates and some chemotherapeutic agents.
Synonyms:	RALBP1; RIP1; RLIP1; RLIP76



[View online »](#)

Product images:



Western blot analysis of RALBP1 expression in HeLa cell lysate.