

Product datasheet for **TA422621**

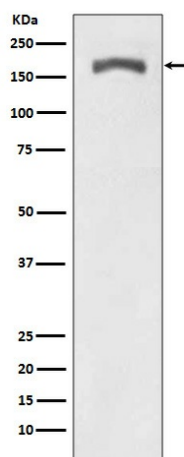
PDGF Receptor beta (PDGFRB) Rabbit Monoclonal Antibody

Product data:

Product Type:	Primary Antibodies
Applications:	ICC/IF, WB
Recommended Dilution:	WB 1:1000~1:2000 ICC/IF 1:50~1:200
Reactivity:	Mouse, Rat
Host:	Rabbit
Isotype:	IgG
Clonality:	Monoclonal
Immunogen:	A synthesized peptide derived from human Phospho-PDGF Receptor beta (Y740)
Specificity:	Phospho-PDGF Receptor beta (Y740) Antibody detects endogenous levels of Phospho-PDGF Receptor beta (Y740)
Formulation:	Rabbit IgG in phosphate buffered saline , pH 7.4, 150mM NaCl, 0.02% sodium azide and 50% glycerol.
Concentration:	lot specific
Purification:	Affinity-chromatography
Conjugation:	Unconjugated
Storage:	Store at +4°C short term. Store at -24°C long term. Avoid freeze / thaw cycle.
Predicted Protein Size:	190kDa
Gene Name:	platelet derived growth factor receptor beta
Database Link:	P09619
Background:	This gene encodes a cell surface tyrosine kinase receptor for members of the platelet-derived growth factor family. These growth factors are mitogens for cells of mesenchymal origin. The identity of the growth factor bound to a receptor monomer determines whether the functional receptor is a homodimer or a heterodimer, composed of both platelet-derived growth factor receptor alpha and beta polypeptides.
Synonyms:	CD140b; EC 2.7.10.1; kinase PDGFR-beta; PDGF-R-beta; PDGFR;; PDGFR-beta; PGFRB


[View online »](#)

Product images:



Western blot analysis of Phospho-PDGF Receptor beta (Y740) expression in NIH 3T3 treated with PDGF.