

Product datasheet for **TA422608**

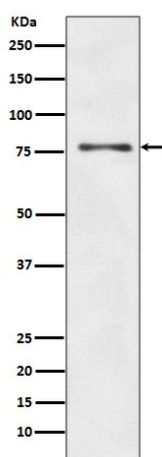
ATG7 Rabbit Monoclonal Antibody

Product data:

Product Type:	Primary Antibodies
Applications:	FC, ICC/IF, IHC, IP, WB
Recommended Dilution:	WB 1:10000~1:50000 IHC 1:50~1:200 ICC/IF 1:50~1:200 IP 1:20 FC 1:20
Reactivity:	Human
Host:	Rabbit
Isotype:	IgG
Clonality:	Monoclonal
Immunogen:	A synthesized peptide derived from human ATG7
Specificity:	ATG7 Antibody detects endogenous levels of ATG7
Formulation:	Rabbit IgG in phosphate buffered saline , pH 7.4, 150mM NaCl, 0.02% sodium azide and 50% glycerol.
Concentration:	lot specific
Purification:	Affinity-chromatography
Conjugation:	Unconjugated
Storage:	Store at +4°C short term. Store at -23°C long term. Avoid freeze / thaw cycle.
Predicted Protein Size:	78kDa
Gene Name:	autophagy related 7
Database Link:	Entrez Gene 10533 Human O95352
Background:	The molecular machinery of autophagy was largely discovered in yeast and referred to as autophagy-related (Atg) genes. Formation of the autophagosome involves a ubiquitin-like conjugation system in which Atg12 is covalently bound to Atg5 and targeted to autophagosome vesicles. This conjugation reaction is mediated by the ubiquitin E1-like enzyme Atg7 and the E2-like enzyme Atg10.
Synonyms:	APG7-LIKE; APG7L; ATG7; DKFZp434N0735; GSA7


[View online »](#)

Product images:



Western blot analysis of ATG7 expression in HepG2 cell lysate.