

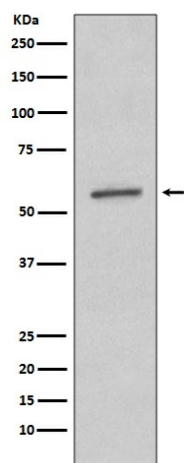
Product datasheet for TA422579

SGK1 Rabbit Monoclonal Antibody

Product data:

Product Type:	Primary Antibodies
Applications:	FC, IHC, IP, WB
Recommended Dilution:	WB 1:500~1:1000 IHC 1:50~1:200 IP 1:50 FC 1:30
Reactivity:	Human, Mouse, Rat
Host:	Rabbit
Isotype:	IgG
Clonality:	Monoclonal
Immunogen:	A synthesized peptide derived from human SGK1
Specificity:	SGK1 Antibody detects endogenous levels of SGK1
Formulation:	Rabbit IgG in phosphate buffered saline , pH 7.4, 150mM NaCl, 0.02% sodium azide and 50% glycerol.
Concentration:	lot specific
Purification:	Affinity-chromatography
Conjugation:	Unconjugated
Storage:	Store at +4°C short term. Store at -23°C long term. Avoid freeze / thaw cycle.
Predicted Protein Size:	57kDa
Gene Name:	serum/glucocorticoid regulated kinase 1
Database Link:	Entrez Gene 6446 Human O00141
Background:	Serum and glucocorticoid-inducible kinase (SGK) is a serine/threonine kinase closely related to Akt. SGK is rapidly induced in response to a variety of stimuli, including serum, glucocorticoid, follicle stimulating hormone, osmotic shock, and mineralocorticoids. SGK activation can be accomplished via HGF PI3K-dependent pathways and by integrin-mediated PI3K-independent pathways. Induction and activation of SGK has been implicated in activating the modulation of anti-apoptotic and cell cycle regulation.
Synonyms:	EC 2.7.11.1; kinase SGK; Serum/glucocorticoid-regulated kinase; SGK; Sgk; SGK1; Sgk1


[View online »](#)

Product images:

Western blot analysis of SGK1 expression in A431 cell lysate.