

Product datasheet for **TA422570**

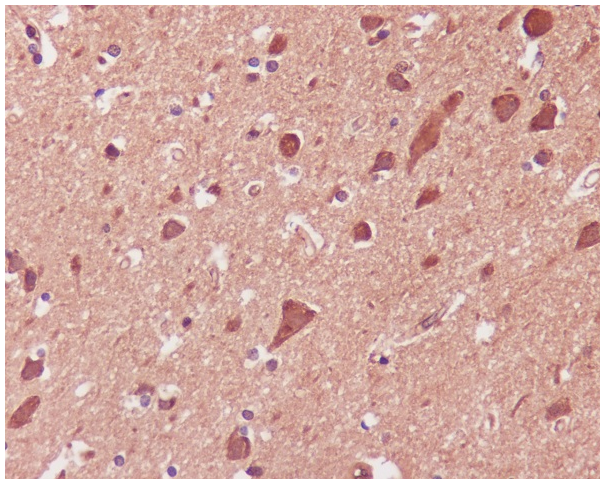
p38 (MAPK14) Rabbit Monoclonal Antibody

Product data:

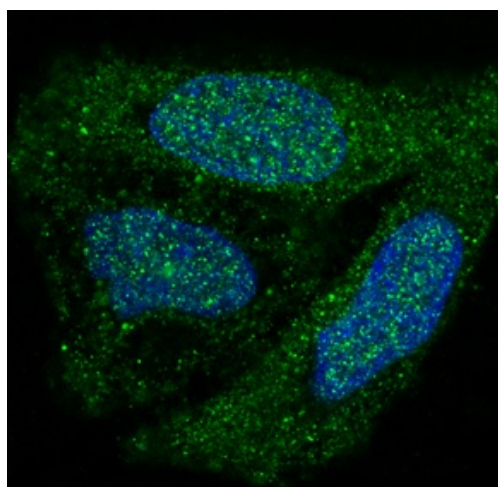
Product Type:	Primary Antibodies
Applications:	ICC/IF, IHC, WB
Recommended Dilution:	WB 1:500~1:2000 IHC 1:50~1:200 ICC/IF 1:50~1:200
Reactivity:	Human, Mouse, Rat
Host:	Rabbit
Isotype:	IgG
Clonality:	Monoclonal
Immunogen:	A synthesized peptide derived from human p38 MAPK
Specificity:	p38 MAPK Antibody detects endogenous levels of p38 MAPK
Formulation:	Rabbit IgG in phosphate buffered saline , pH 7.4, 150mM NaCl, 0.02% sodium azide and 50% glycerol.
Concentration:	lot specific
Purification:	Affinity-chromatography
Conjugation:	Unconjugated
Storage:	Store at +4°C short term. Store at -24°C long term. Avoid freeze / thaw cycle.
Predicted Protein Size:	41kDa
Gene Name:	mitogen-activated protein kinase 14
Database Link:	Entrez Gene 1432 Human Q16539
Background:	The protein encoded by this gene is a member of the MAP kinase family. MAP kinases act as an integration point for multiple biochemical signals, and are involved in a wide variety of cellular processes such as proliferation, differentiation, transcription regulation and development.
Synonyms:	CRK1, CSAID binding protein, CSBP, CSBP1, CSBP2, MAP kinase MXI2, MAP kinase p38, MAPK14, MAX-interacting protein 2, MK14, MXI2, Mitogen-activated protein kinase 14


[View online »](#)

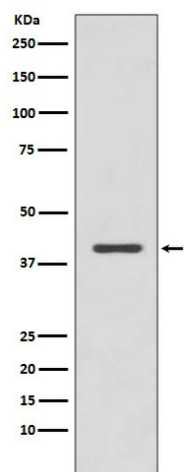
Product images:



Immunohistochemical analysis of paraffin-embedded human brain, using p38 MAPK Antibody.



Immunofluorescent analysis of HeLa cells, using p38 MAPK Antibody.



Western blot analysis of p38 MAPK expression in Jurkat cell lysate.