

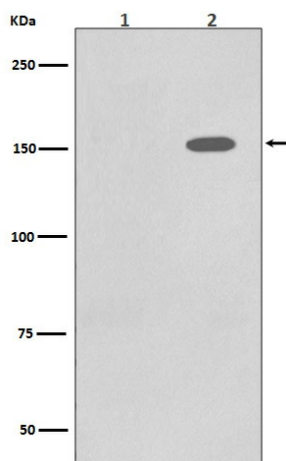
Product datasheet for TA422566

EGFR Rabbit Monoclonal Antibody

Product data:

Product Type:	Primary Antibodies
Applications:	ICC/IF, IP, WB
Recommended Dilution:	WB 1:500~1:2000 ICC/IF 1:50~1:200 IP 1:50
Reactivity:	Human
Host:	Rabbit
Isotype:	IgG
Clonality:	Monoclonal
Immunogen:	A synthesized peptide derived from human Phospho-EGFR (Y1086)
Specificity:	Phospho-EGFR (Y1086) Antibody detects endogenous levels of Phospho-EGFR (Y1086)
Formulation:	Rabbit IgG in phosphate buffered saline , pH 7.4, 150mM NaCl, 0.02% sodium azide and 50% glycerol.
Concentration:	lot specific
Purification:	Affinity-chromatography
Conjugation:	Unconjugated
Storage:	Store at +4°C short term. Store at -22°C long term. Avoid freeze / thaw cycle.
Predicted Protein Size:	150kDa
Gene Name:	epidermal growth factor receptor
Database Link:	Entrez Gene 1956 Human P00533
Background:	The epidermal growth factor (EGF) receptor is a transmembrane tyrosine kinase that belongs to the HER/ErbB protein family. Ligand binding results in receptor dimerization, autophosphorylation, activation of downstream signaling, internalization, and lysosomal degradation. Phospho-EGF Receptor (Tyr1086) Antibody is directed against a previously unpublished EGF receptor phosphorylation site at Tyr1086, Phosphorylation of EGF receptor at Tyr1086 was observed in select carcinoma cell lines and in tumors.
Synonyms:	EC 2.7.10.1; Epidermal growth factor receptor precursor; ERBB1; kinase EGFR; Receptor protein-tyrosine kinase ErbB-1


[View online »](#)

Product images:

Western blot analysis of Phospho-EGFR (Y1086) expression in (1) A431 cell lysate; (2) A431 cell lysate treated with EGF.