

## Product datasheet for TA422559

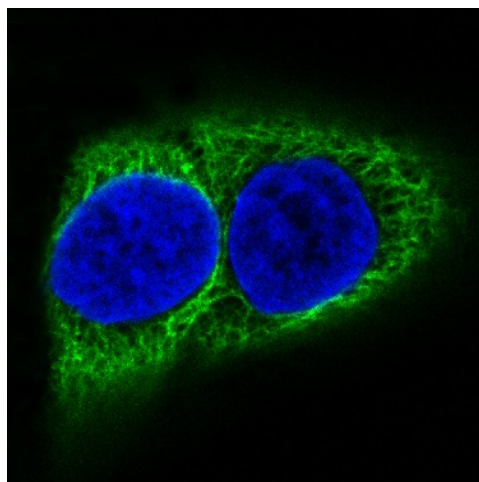
### Cytokeratin 10 (KRT10) Rabbit Monoclonal Antibody

#### Product data:

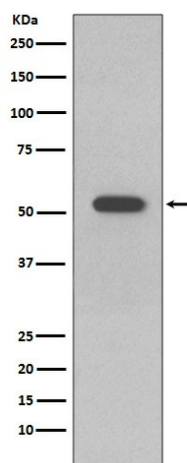
Product Type:	Primary Antibodies
Applications:	ICC/IF, IHC, WB
Recommended Dilution:	WB 1:500~1:2000 IHC 1:50~1:200 ICC/IF 1:50~1:200
Reactivity:	Human, Mouse, Rat
Host:	Rabbit
Isotype:	IgG
Clonality:	Monoclonal
Immunogen:	A synthesized peptide derived from human Cytokeratin 10
Specificity:	Cytokeratin 10 Antibody detects endogenous levels of Cytokeratin 10
Formulation:	Rabbit IgG in phosphate buffered saline , pH 7.4, 150mM NaCl, 0.02% sodium azide and 50% glycerol.
Concentration:	lot specific
Purification:	Affinity-chromatography
Conjugation:	Unconjugated
Storage:	Store at +4°C short term. Store at -23°C long term. Avoid freeze / thaw cycle.
Predicted Protein Size:	60kDa
Gene Name:	keratin 10
Database Link:	<a href="#">Entrez Gene 3858 Human P13645</a>
Background:	K10 a type I cytoskeletal keratin. The keratins are intermediate filament proteins responsible for the structural integrity of epithelial cells and are subdivided into cytokeratins and hair keratins. There are two types of cytoskeletal and microfibrillar keratin: type I (acidic; 40-55 kDa) [K9 to K20] and type II (neutral to basic; 56-70 kDa) [K1 to K8]. Both a basic and an acidic keratin are required for filament assembly.
Synonyms:	CK-10; CK10; Cytokeratin-10; cytokeratin 10; K1C10; K10; Keratin, type I cytoskeletal 10; Keratin-10; keratin 10; KPP; KRT10


[View online »](#)

## Product images:



Immunofluorescent analysis of HACAT cells, using Cytokeratin 10 Antibody.



Western blot analysis of Cytokeratin 10 expression in A431 cell lysate.