

Product datasheet for TA422507

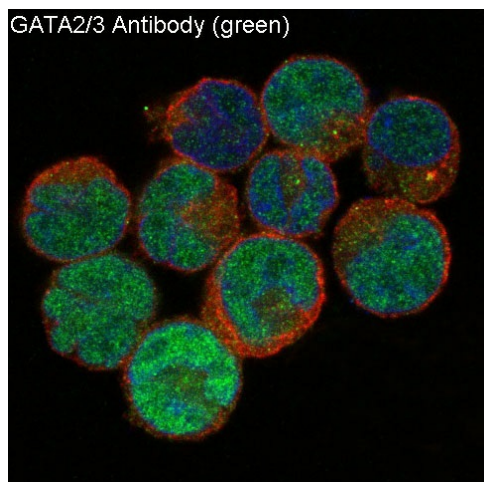
GATA2 Rabbit Monoclonal Antibody

Product data:

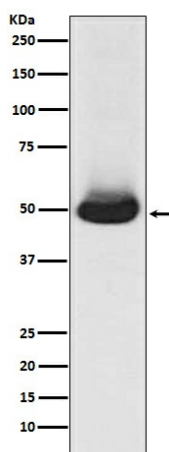
Product Type:	Primary Antibodies
Applications:	ICC/IF, IHC, IP, WB
Recommended Dilution:	WB 1:500~1:2000 IHC 1:50~1:200 ICC/IF 1:50~1:200 IP 1:50
Reactivity:	Human, Mouse, Rat
Host:	Rabbit
Isotype:	IgG
Clonality:	Monoclonal
Immunogen:	A synthesized peptide derived from human GATA2/3
Specificity:	GATA2/3 Antibody detects endogenous levels of total GATA2/3
Formulation:	Rabbit IgG in phosphate buffered saline , pH 7.4, 150mM NaCl, 0.02% sodium azide and 50% glycerol.
Concentration:	lot specific
Purification:	Affinity-chromatography
Conjugation:	Unconjugated
Storage:	Store at +4°C short term. Store at -22°C long term. Avoid freeze / thaw cycle.
Predicted Protein Size:	51kDa
Gene Name:	GATA binding protein 2
Database Link:	Entrez Gene 2624 Human P23769/P23771
Background:	Transcriptional activator which regulates endothelin-1 gene expression in endothelial cells. Binds to the consensus sequence 5'-AGATAG-3'.
Synonyms:	DCML; GATA binding protein 2; GATA binding protein 3; HDR; HDRS; IMD21; MONOMAC; NFE1B


[View online »](#)

Product images:



Immunofluorescent analysis of K562 cells, using GATA2/3 Antibody .



Western blot analysis of GATA2/3 expression in K562 cell lysate.