

Product datasheet for **TA422496**

JNK1 (MAPK8) Rabbit Monoclonal Antibody [Clone ID: OTIRA0315]

Product data:

Product Type:	Primary Antibodies
Clone Name:	OTIRA0315
Applications:	ICC, ICC/IF, IP, WB
Recommended Dilution:	WB:1/1000-2000;ICC/IF:1/50-200;IP:1/20-50
Reactivity:	Human, Mouse, Rat, Cow, Dog, Monkey, Zebrafish
Host:	Rabbit
Isotype:	IgG
Clonality:	Monoclonal
Immunogen:	A synthesized peptide derived from human JNK1+JNK2+JNK3
Specificity:	JNK1+JNK2+JNK3 Antibody detects endogenous levels of total JNK1+JNK2+JNK3
Formulation:	Rabbit IgG in 10mM phosphate buffered saline , pH 7.4, 150mM sodium chloride, 0.05% BSA, 0.02% sodium azide and 50% glycerol.
Concentration:	lot specific
Purification:	Affinity-chromatography
Conjugation:	Unconjugated
Storage:	Store at +4°C short term. Store at -22°C long term. Avoid freeze / thaw cycle.
Predicted Protein Size:	46,54kDa
Gene Name:	mitogen-activated protein kinase 8
Database Link:	Entrez Gene 5599 Human P53779

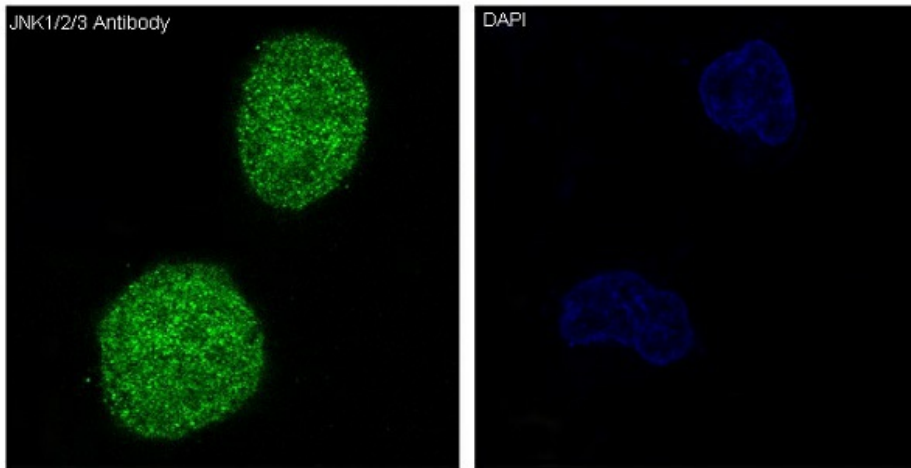


Background:

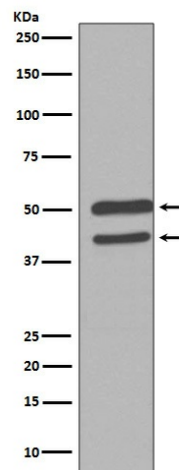
Serine/threonine-protein kinase involved in various processes such as cell proliferation, differentiation, migration, transformation and programmed cell death. Extracellular stimuli such as proinflammatory cytokines or physical stress stimulate the stress-activated protein kinase/c-Jun N-terminal kinase (SAP/JNK) signaling pathway.

Synonyms:

c-Jun N-terminal kinase 3; JNK1; JNK2; JNK3; JNK3 alpha protein kinase; JNK3A; MAPK 10; MAPK10; MAP kinase 10; MAP kinase p49 3F12

Product images:

Immunofluorescent analysis of HeLa cells, using JNK1/2/3 Antibody.



Western blot analysis of JNK1/2/3 Antibody expression in HeLa cell lysate.