

Product datasheet for **TA422481**

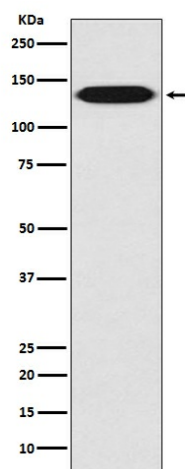
Integrin beta 1 (ITGB1) Rabbit Monoclonal Antibody

Product data:

Product Type:	Primary Antibodies
Applications:	IHC, WB
Recommended Dilution:	WB 1:500~1:2000 IHC 1:100~1:500
Reactivity:	Human, Mouse, Rat
Host:	Rabbit
Isotype:	IgG
Clonality:	Monoclonal
Immunogen:	A synthesized peptide derived from human Integrin beta 1
Specificity:	Integrin beta 1 Antibody detects endogenous levels of total Integrin beta 1
Formulation:	Rabbit IgG in phosphate buffered saline , pH 7.4, 150mM NaCl, 0.02% sodium azide and 50% glycerol.
Concentration:	lot specific
Purification:	Affinity-chromatography
Conjugation:	Unconjugated
Storage:	Store at +4°C short term. Store at -24°C long term. Avoid freeze / thaw cycle.
Predicted Protein Size:	140kDa
Gene Name:	integrin subunit beta 1
Database Link:	Entrez Gene 3688 Human P05556
Background:	Integrins are heterodimeric proteins made up of alpha and beta subunits. At least 18 alpha and 8 beta subunits have been described in mammals. Integrin family members are membrane receptors involved in cell adhesion and recognition in a variety of processes including embryogenesis, hemostasis, tissue repair, immune response and metastatic diffusion of tumor cells. The protein encoded by this gene is a beta subunit. Six alternatively spliced variants have been found for this gene which encode five proteins with alternate carboxy termini.
Synonyms:	CD29; Fibronectin receptor beta subunit; FNRB; integrin beta-1; Integrin beta-1 precursor; Integrin VLA-4 beta subunit; ITB1; ITGB1

[View online »](#)

Product images:



Western blot analysis of Integrin beta 1 expression in A431 cell lysate.