

Product datasheet for **TA422453**

BRD4 Rabbit Monoclonal Antibody

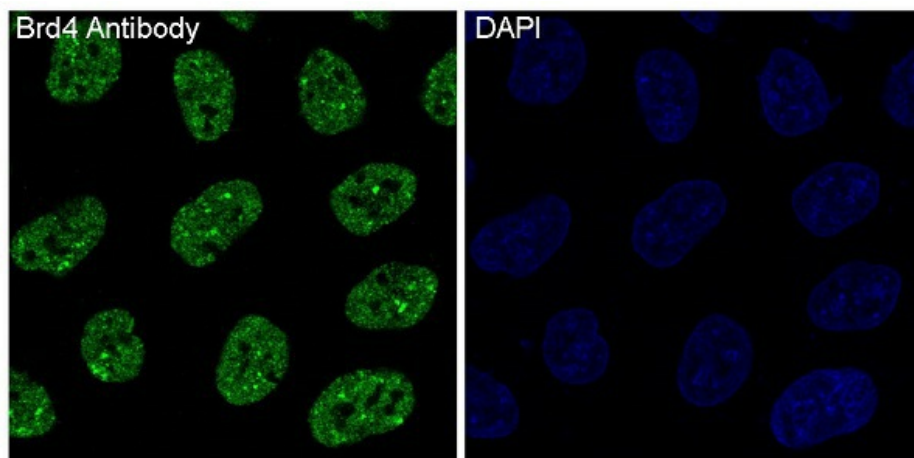
Product data:

Product Type:	Primary Antibodies
Applications:	ICC/IF, IHC, IP, WB
Recommended Dilution:	WB 1:500~1:2000 IHC 1:50~1:200 ICC/IF 1:50~1:200 IP 1:50
Reactivity:	Human, Mouse, Rat
Host:	Rabbit
Isotype:	IgG
Clonality:	Monoclonal
Immunogen:	A synthesized peptide derived from human Brd4
Specificity:	Brd4 Antibody detects endogenous levels of total Brd4
Formulation:	Rabbit IgG in phosphate buffered saline , pH 7.4, 150mM NaCl, 0.02% sodium azide and 50% glycerol.
Concentration:	lot specific
Purification:	Affinity-chromatography
Conjugation:	Unconjugated
Storage:	Store at +4°C short term. Store at -20°C long term. Avoid freeze / thaw cycle.
Predicted Protein Size:	152kDa
Gene Name:	bromodomain containing 4
Database Link:	Entrez Gene 23476 Human O60885
Background:	Bromodomain-containing protein 4 (BRD4) is a member of the bromodomains and extra terminal (BET) family of proteins, which also includes BRD2, BRD3, and BRDT. BET family proteins contain two tandem bromodomains and an extra terminal (ET) domain, and bind acetyl lysine residues. BRD4 is a chromatin-binding protein with a preference for Lys14 on histone H3 as well as Lys5 and Lys12 on histone H4. BRD4 chromatin binding occurs throughout the cell cycle, including condensed mitotic chromosomes, when the majority of genes are silenced.
Synonyms:	Brd4; Bromodomain containing 4; CAP; chromosome associated protein; HUNK1; MCAP

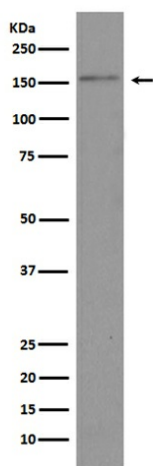


[View online »](#)

Product images:



Immunofluorescent analysis of HeLa cells, using Brd4 Antibody .



Western blot analysis of Brd4 expression in HeLa cell lysate.