

Product datasheet for **TA422451**

Alkaline Phosphatase (ALPL) Rabbit Monoclonal Antibody [Clone ID: OTIRA0270]

Product data:

Product Type:	Primary Antibodies
Clone Name:	OTIRA0270
Applications:	FC, ICC/IF, IHC, IP, WB
Recommended Dilution:	WB 1:5000~1:10000 IHC 1:50~1:200 ICC/IF 1:50~1:100 IP 1:50 FC 1:50
Reactivity:	Human, Mouse, Rat
Host:	Rabbit
Isotype:	IgG
Clonality:	Monoclonal
Immunogen:	A synthesized peptide derived from human Alkaline Phosphatase
Specificity:	Alkaline Phosphatase Antibody detects endogenous levels of total Alkaline Phosphatase
Formulation:	Rabbit IgG in 10mM phosphate buffered saline , pH 7.4, 150mM sodium chloride, 0.05% BSA, 0.02% sodium azide and 50% glycerol.
Concentration:	lot specific
Purification:	Affinity-chromatography
Conjugation:	Unconjugated
Storage:	Store at +4°C short term. Store at -24°C long term. Avoid freeze / thaw cycle.
Predicted Protein Size:	57kDa
Gene Name:	alkaline phosphatase, liver/bone/kidney
Database Link:	Entrez Gene 249 Human P05186

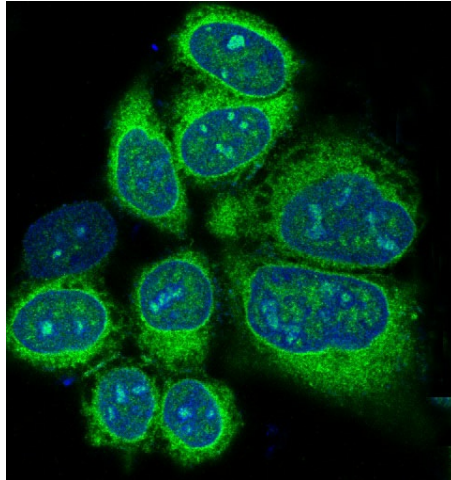


Background:

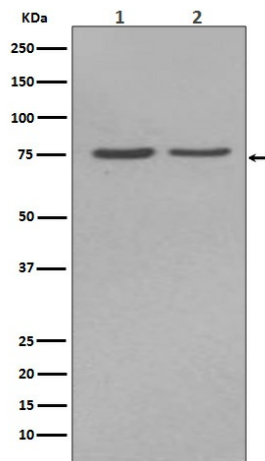
There are at least four distinct but related alkaline phosphatases: intestinal, placental, placental-like, and liver/bone/kidney (tissue non-specific). The first three are located together on chromosome 2, while the tissue non-specific form is located on chromosome 1. The product of this gene is a membrane bound glycosylated enzyme that is not expressed in any particular tissue and is, therefore, referred to as the tissue-nonspecific form of the enzyme.

Synonyms:

Alkaline phosphatase, tissue-nonspecific isozyme; Alkaline phosphatase liver/bone/kidney isozyme; ALPL; AP-TNAP; TNSALP

Product images:

Immunofluorescent analysis of HeLa cells, using Alkaline Phosphatase Antibody .



Western blot analysis of Alkaline Phosphatase expression in (1)HepG2 cell lysate; (2)JAR cell lysate.