

## Product datasheet for **TA422441**

### Rabbit Monoclonal Antibody [Clone ID: OTIRA0260]

#### Product data:

<b>Product Type:</b>	Primary Antibodies
<b>Clone Name:</b>	OTIRA0260
<b>Applications:</b>	ICC, ICC/IF, WB
<b>Recommended Dilution:</b>	WB:1/1000-2000;ICC/IF:1/50-200
<b>Reactivity:</b>	Firefly
<b>Host:</b>	Rabbit
<b>Isotype:</b>	IgG
<b>Clonality:</b>	Monoclonal
<b>Immunogen:</b>	A synthesized peptide derived from Firefly Luciferase
<b>Specificity:</b>	Firefly Luciferase Antibody detects endogenous levels of total Firefly Luciferase
<b>Formulation:</b>	Rabbit IgG in 10mM phosphate buffered saline , pH 7.4, 150mM sodium chloride, 0.05% BSA, 0.02% sodium azide and 50% glycerol.
<b>Concentration:</b>	lot specific
<b>Purification:</b>	Affinity-chromatography
<b>Conjugation:</b>	Unconjugated
<b>Storage:</b>	Store at +4°C short term. Store at -24°C long term. Avoid freeze / thaw cycle.
<b>Predicted Protein Size:</b>	55kDa
<b>Database Link:</b>	<a href="#">P08659</a>

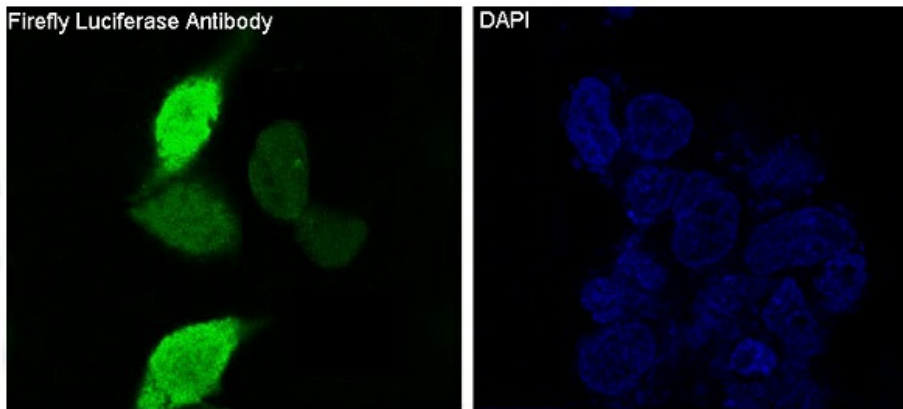


**Background:**

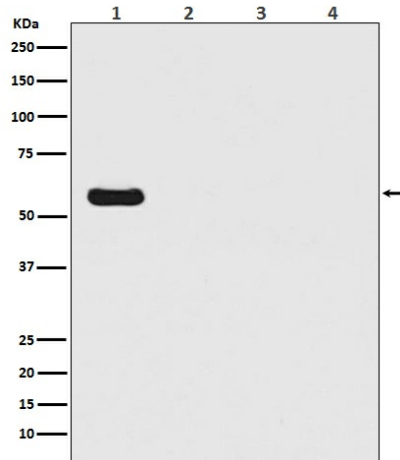
Produces green light with a wavelength of 562 nm. Luciferase from the firefly has become one of the more widely used reporter proteins for the study of gene expression. Luciferase catalyzes a bioluminescent reaction which requires the substrate luciferin as well as Mg<sup>2+</sup> and ATP. Mixing these reagents with the cell extract containing luciferase, results in a flash of light that decays rapidly. This light can be detected by a luminometer. The total light emission is proportional to the luciferase activity of the sample.

**Synonyms:**

Firefly; Luciferase; Luciferin 4 monooxygenase

**Product images:**

Immunofluorescent analysis of 293 cells transfected with Firefly Luciferase, using Firefly Luciferase Antibody .



Western blot analysis of Firefly Luciferase Antibody - N-terminal expression in (1) Firefly Luciferase transfected 293T cell lysate; (2) HeLa cell lysate; (3) NIH/3T3 cell lysate; (4) C6 cell lysate.