

Product datasheet for TA422433

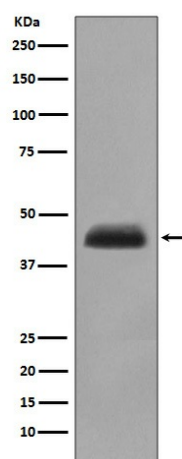
Cytokeratin 15 (KRT15) Rabbit Monoclonal Antibody

Product data:

| | |
|-------------------------|---|
| Product Type: | Primary Antibodies |
| Applications: | FC, ICC/IF, IHC, WB |
| Recommended Dilution: | WB 1:1000~1:2000 IHC 1:50~1:200 ICC/IF 1:50~1:200 FC 1:50 |
| Reactivity: | Human, Mouse |
| Host: | Rabbit |
| Isotype: | IgG |
| Clonality: | Monoclonal |
| Immunogen: | A synthesized peptide derived from human Cytokeratin 15 |
| Specificity: | Cytokeratin 15 Antibody detects endogenous levels of total Cytokeratin 15 |
| Formulation: | Rabbit IgG in phosphate buffered saline , pH 7.4, 150mM NaCl, 0.02% sodium azide and 50% glycerol. |
| Concentration: | lot specific |
| Purification: | Affinity-chromatography |
| Conjugation: | Unconjugated |
| Storage: | Store at +4°C short term. Store at -20°C long term. Avoid freeze / thaw cycle. |
| Predicted Protein Size: | 45kDa |
| Gene Name: | keratin 15 |
| Database Link: | Entrez Gene 3866 Human P19012 |
| Background: | The keratins are intermediate filament proteins responsible for the structural integrity of epithelial cells and are subdivided into cytokeratins and hair keratins. There are two types of cytoskeletal and microfibrillar keratin: type I (acidic; 40-55 kDa) [K9 to K20] and type II (neutral to basic; 56-70 kDa) [K1 to K8]. Both a basic and an acidic keratin are required for filament assembly. Note: This description may include information from UniProtKB. |
| Synonyms: | CK-15; CK15; cytokeratin15; K1C15; K1CO; K15; Keratin-15; keratin-15, beta; keratin 15; KRT15; KRTB; type I cytoskeletal 15 |


[View online »](#)

Product images:



Western blot analysis of Cytokeratin 15 expression in human fetal thymus lysate.