

Product datasheet for **TA422389**

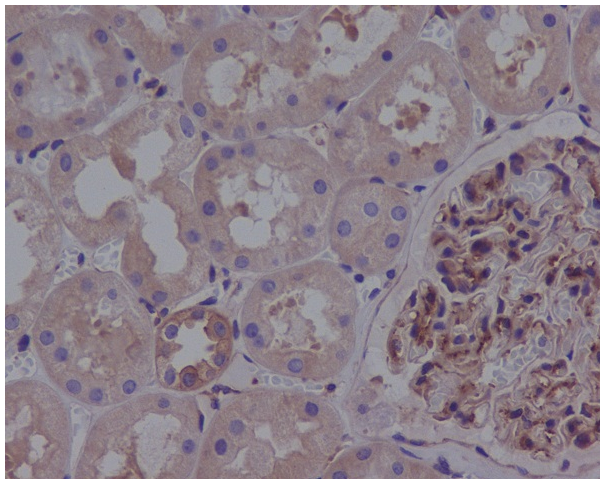
ROCK1 Rabbit Monoclonal Antibody

Product data:

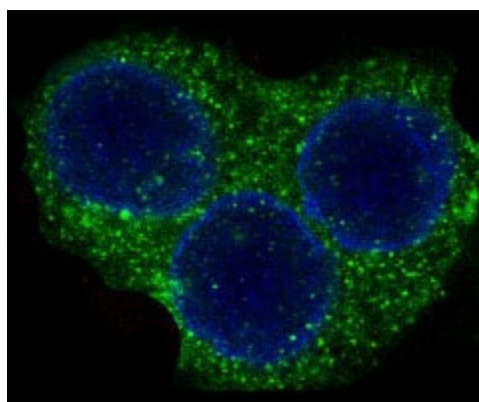
Product Type:	Primary Antibodies
Applications:	FC, ICC/IF, IHC, IP, WB
Recommended Dilution:	WB 1:500~1:2000 IHC 1:50~1:200 ICC/IF 1:50~1:200 IP 1:50 FC 1:50
Reactivity:	Human, Mouse, Rat
Host:	Rabbit
Isotype:	IgG
Clonality:	Monoclonal
Immunogen:	A synthesized peptide derived from human ROCK1
Specificity:	ROCK1 Antibody detects endogenous levels of total ROCK1
Formulation:	Rabbit IgG in phosphate buffered saline , pH 7.4, 150mM NaCl, 0.02% sodium azide and 50% glycerol.
Concentration:	lot specific
Purification:	Affinity-chromatography
Conjugation:	Unconjugated
Storage:	Store at +4°C short term. Store at -23°C long term. Avoid freeze / thaw cycle.
Predicted Protein Size:	158kDa
Gene Name:	Rho associated coiled-coil containing protein kinase 1
Database Link:	Entrez Gene 6093 Human Q13464
Background:	ROCK1 Protein kinase which is a key regulator of actin cytoskeleton and cell polarity. Involved in regulation of smooth muscle contraction, actin cytoskeleton organization, stress fiber and focal adhesion formation, neurite retraction, cell adhesion and motility via phosphorylation of DAPK3, GFAP, LIMK1, LIMK2, MYL9/MLC2, PFN1 and PPP1R12A. Phosphorylates FHOD1 and acts synergistically with it to promote SRC-dependent non-apoptotic plasma membrane blebbing.
Synonyms:	p160 ROCK-1; p160-ROCK; p160ROCK; PRO0435; Renal carcinoma antigen NY-REN-35; Rho-associated protein kinase 1; Rho kinase



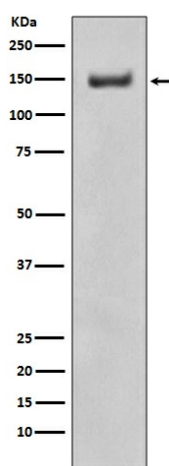
[View online »](#)

Product images:


Immunohistochemical analysis of paraffin-embedded human kidney, using ROCK1 Antibody.



Immunofluorescent analysis of HeLa cells, using ROCK1 Antibody .



Western blot analysis of ROCK1 expression in Ramos cell lysate.