

## Product datasheet for **TA422351**

### SOX2 Rabbit Monoclonal Antibody

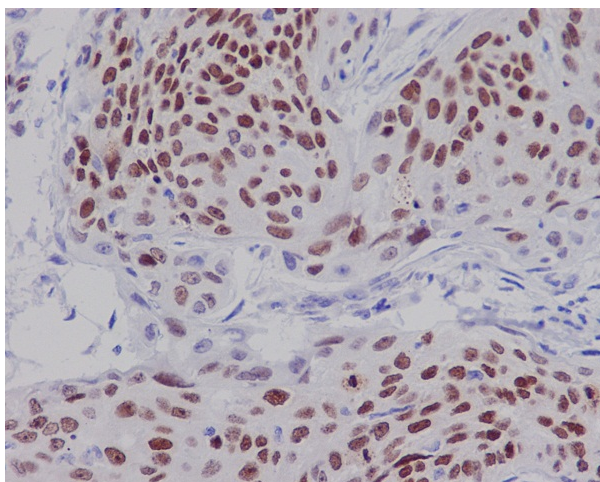
#### Product data:

Product Type:	Primary Antibodies
Applications:	ICC/IF, IHC, WB
Recommended Dilution:	WB 1:1000~1:2000 IHC 1:50~1:200 ICC/IF 1:50~1:200
Reactivity:	Human, Mouse
Host:	Rabbit
Isotype:	IgG
Clonality:	Monoclonal
Immunogen:	A synthesized peptide derived from human SOX2
Specificity:	SOX2 Antibody detects endogenous levels of total SOX2
Formulation:	Rabbit IgG in phosphate buffered saline , pH 7.4, 150mM NaCl, 0.02% sodium azide and 50% glycerol.
Concentration:	lot specific
Purification:	Affinity-chromatography
Conjugation:	Unconjugated
Storage:	Store at +4°C short term. Store at -24°C long term. Avoid freeze / thaw cycle.
Predicted Protein Size:	34kDa
Gene Name:	SRY-box 2
Database Link:	<a href="#">Entrez Gene 6657 Human P48431</a>
Background:	Transcription factor that forms a trimeric complex with OCT4 on DNA and controls the expression of a number of genes involved in embryonic development such as YES1, FGF4, UTF1 and ZFP206 (By similarity). Critical for early embryogenesis and for embryonic stem cell pluripotency. May function as a switch in neuronal development. Downstream SRRT target that mediates the promotion of neural stem cell self-renewal (By similarity). Keeps neural cells undifferentiated by counteracting the activity of proneural proteins and suppresses neuronal differentiation (By similarity).
Synonyms:	ANOP3; lcc; MCOPS3; MGC2413; SOX2; SRY related HMG box 2

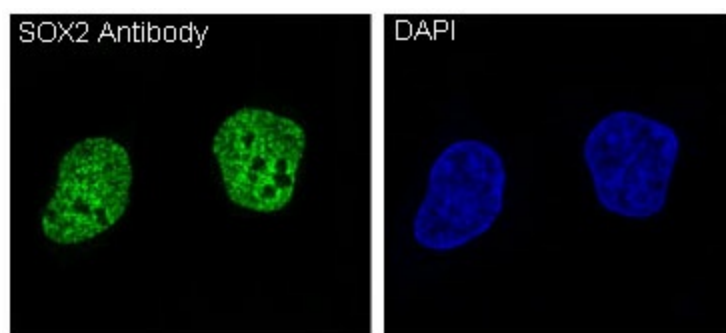


[View online »](#)

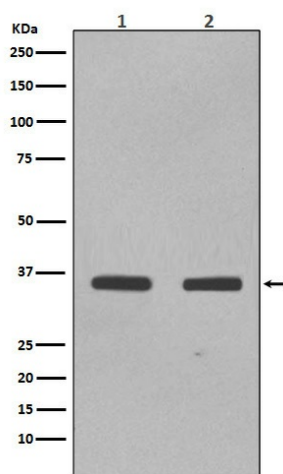
## Product images:



Immunohistochemical analysis of paraffin-embedded human cervix carcinoma, using SOX2 Antibody.



Immunofluorescent analysis of NCCIT cells, using SOX2 Antibody .



Western blot analysis of SOX2 expression in (1) NCCIT cell lysate; (2) F9 cell lysate.