

Product datasheet for **TA422346**

S6K1 (RPS6KB1) Rabbit Monoclonal Antibody

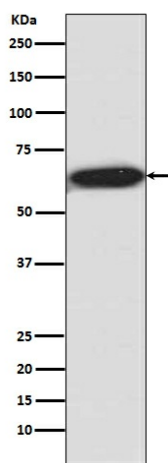
Product data:

Product Type:	Primary Antibodies
Applications:	IP, WB
Recommended Dilution:	WB 1:500~1:2000 IP 1:30
Reactivity:	Human, Rat
Host:	Rabbit
Isotype:	IgG
Clonality:	Monoclonal
Immunogen:	A synthesized peptide derived from human Phospho-S6K1 (T421 + S424)
Specificity:	Phospho-S6K1 (T421 + S424) Antibody detects endogenous levels of total Phospho-S6K1 (T421 + S424)
Formulation:	Rabbit IgG in phosphate buffered saline , pH 7.4, 150mM NaCl, 0.02% sodium azide and 50% glycerol.
Concentration:	lot specific
Purification:	Affinity-chromatography
Conjugation:	Unconjugated
Storage:	Store at +4°C short term. Store at -22°C long term. Avoid freeze / thaw cycle.
Predicted Protein Size:	70kDa
Gene Name:	ribosomal protein S6 kinase B1
Database Link:	Entrez Gene 6198 Human P23443
Background:	This gene encodes a member of the RSK (ribosomal S6 kinase) family of serine/threonine kinases. This kinase contains 2 non-identical kinase catalytic domains and phosphorylates several residues of the S6 ribosomal protein.
Synonyms:	EC 2.7.11.1, KS6B1, P70-S6K, RPS6KB1, Ribosomal protein S6 kinase, Ribosomal protein S6 kinase, 70kDa, polypeptide 1, S6K, kinase p70S6K, p70-S6K



[View online »](#)

Product images:



Western blot analysis of SK61 phosphorylation expression in HEK293 cell lysate.