

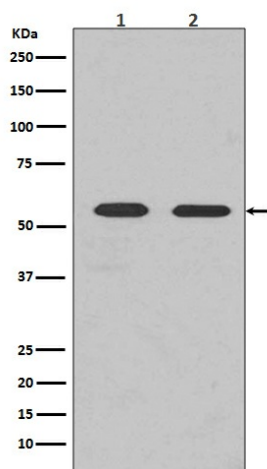
Product datasheet for TA422326

FYN Rabbit Monoclonal Antibody

Product data:

Product Type:	Primary Antibodies
Applications:	ICC/IF, WB
Recommended Dilution:	WB 1:500~1:2000 ICC/IF 1:50~1:200
Reactivity:	Human, Mouse, Rat
Host:	Rabbit
Isotype:	IgG
Clonality:	Monoclonal
Immunogen:	A synthesized peptide derived from human Fyn
Specificity:	Fyn Antibody detects endogenous levels of total Fyn
Formulation:	Rabbit IgG in phosphate buffered saline , pH 7.4, 150mM NaCl, 0.02% sodium azide and 50% glycerol.
Concentration:	lot specific
Purification:	Affinity-chromatography
Conjugation:	Unconjugated
Storage:	Store at +4°C short term. Store at -22°C long term. Avoid freeze / thaw cycle.
Predicted Protein Size:	60kDa
Gene Name:	FYN proto-oncogene, Src family tyrosine kinase
Database Link:	Entrez Gene 2534 Human P06241
Background:	Tyrosine-protein kinase implicated in the control of cell growth. Plays a role in the regulation of intracellular calcium levels, with isoform 2 showing the greater ability to mobilize cytoplasmic calcium in comparison to isoform 1. Required in brain development and mature brain function with important roles in the regulation of axon growth, axon guidance, and neurite extension.
Synonyms:	P59 FYN, Protein tyrosine kinase fyn, SLK, Src like kinase , Src yes related novel gene, SYN, Tyrosine kinase p59fyn, Fyn, C syn protooncogene,


[View online »](#)

Product images:

Western blot analysis of Fyn expression in (1) Mouse brain lysate; (2) HEK293 cell lysate.