

Product datasheet for TA422309

CD34 Rabbit Monoclonal Antibody [Clone ID: OTIRA0128]

Product data:

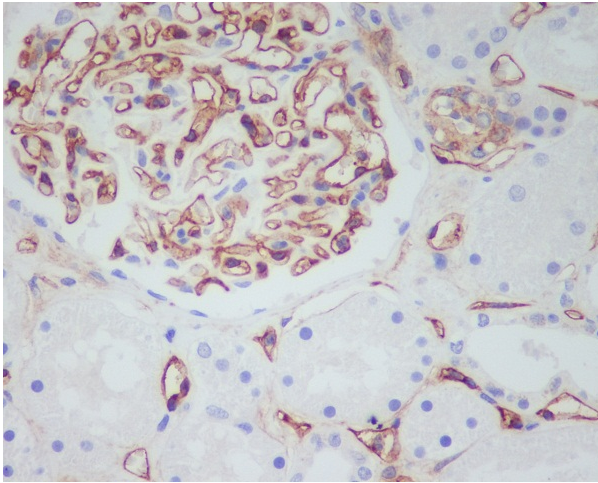
Product Type:	Primary Antibodies
Clone Name:	OTIRA0128
Applications:	FC, ICC, ICC/IF, IHC, IP, WB
Recommended Dilution:	WB:1/1000-2000;IHC:1/100-200;ICC/IF:1/50-200;IP:1/20-50;FC:1/20-100
Reactivity:	Human, Mouse, Rat, Dog
Host:	Rabbit
Isotype:	IgG
Clonality:	Monoclonal
Immunogen:	A synthesized peptide derived from human CD34
Specificity:	CD34 Antibody detects endogenous levels of total CD34
Formulation:	Rabbit IgG in 10mM phosphate buffered saline , pH 7.4, 150mM sodium chloride, 0.05% BSA, 0.02% sodium azide and 50% glycerol.
Concentration:	lot specific
Purification:	Affinity-chromatography
Conjugation:	Unconjugated
Storage:	Store at +4°C short term. Store at -23°C long term. Avoid freeze / thaw cycle.
Predicted Protein Size:	120kDa
Gene Name:	CD34 molecule
Database Link:	Entrez Gene 947 Human P28906



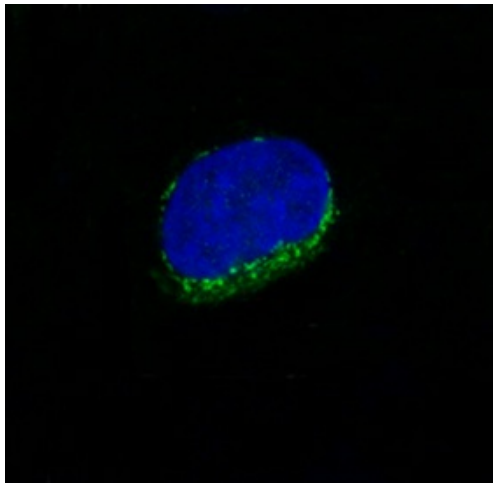
Background: Possible adhesion molecule with a role in early hematopoiesis by mediating the attachment of stem cells to the bone marrow extracellular matrix or directly to stromal cells. Could act as a scaffold for the attachment of lineage specific glycans, allowing stem cells to bind to lectins expressed by stromal cells or other marrow components. Presents carbohydrate ligands to selectins.

Synonyms: CD34; Hematopoietic progenitor cell antigen CD34

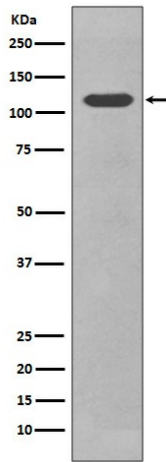
Product images:



Immunohistochemical analysis of paraffin-embedded human kidney, using CD34 Antibody.



Immunofluorescent analysis of HUVEC cells, using CD34 Antibody .



Western blot analysis of CD34 in expression NIH/3T3 cell lysate.