

Product datasheet for **TA422301**

Torsin A (TOR1A) Rabbit Monoclonal Antibody

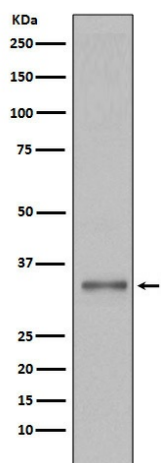
Product data:

Product Type:	Primary Antibodies
Applications:	FC, WB
Recommended Dilution:	WB 1:500~1:2000 FC 1:50
Reactivity:	Human
Host:	Rabbit
Isotype:	IgG
Clonality:	Monoclonal
Immunogen:	A synthesized peptide derived from human Torsin A
Specificity:	Torsin A Antibody detects endogenous levels of total Torsin A
Formulation:	Rabbit IgG in phosphate buffered saline , pH 7.4, 150mM NaCl, 0.02% sodium azide and 50% glycerol.
Concentration:	lot specific
Purification:	Affinity-chromatography
Conjugation:	Unconjugated
Storage:	Store at +4°C short term. Store at -24°C long term. Avoid freeze / thaw cycle.
Predicted Protein Size:	35kDa
Gene Name:	torsin family 1 member A
Database Link:	Entrez Gene 1861 Human O14656
Background:	The neurological condition Dystonia is associated with sustained muscle contractions and abnormal posturing. TorsinA, torsinB, torp2A and torp3A belong to the family of ATPases associated with cellular activities (AAA+) and mutations in torsinA cause early onset dystonia. TorsinA has been shown to suppress intracellular protein aggregation in <i>C. elegans</i> and possesses chaperon activity. Interestingly, torsinA is highly expressed in dopaminergic neurons and associates with alpha-synuclein in Lewy bodies, which pathologically characterize Parkinson's Disease.
Synonyms:	DQ2; DYT1; TOR1A; TorsinA



[View online »](#)

Product images:



Western blot analysis of Torsin A expression in 293T cell lysate.