

## Product datasheet for **TA422287**

### YY1 Rabbit Monoclonal Antibody

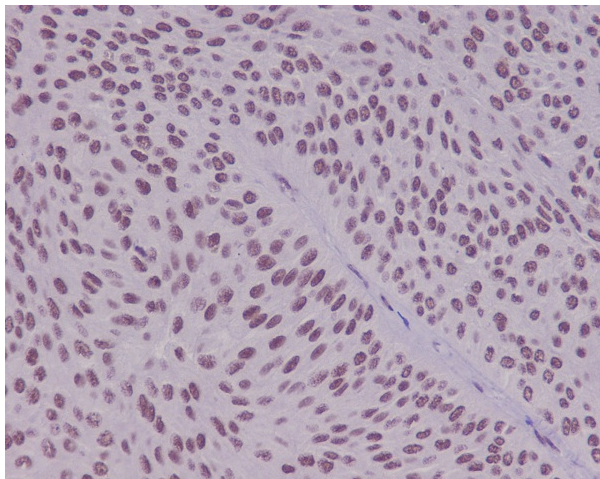
#### Product data:

Product Type:	Primary Antibodies
Applications:	ICC/IF, IHC, IP, WB
Recommended Dilution:	WB 1:500~1:3000 IHC 1:50~1:200 ICC/IF 1:100~1:500 IP 1:50~1:100
Reactivity:	Human, Mouse, Rat
Host:	Rabbit
Isotype:	IgG
Clonality:	Monoclonal
Immunogen:	A synthesized peptide derived from human YY1
Specificity:	YY1 Antibody detects endogenous levels of total YY1
Formulation:	Rabbit IgG in phosphate buffered saline , pH 7.4, 150mM NaCl, 0.02% sodium azide and 50% glycerol.
Concentration:	lot specific
Purification:	Affinity-chromatography
Conjugation:	Unconjugated
Storage:	Store at +4°C short term. Store at -22°C long term. Avoid freeze / thaw cycle.
Predicted Protein Size:	68kDa
Gene Name:	YY1 transcription factor
Database Link:	<a href="#">Entrez Gene 7528 Human P25490</a>
Background:	Its activity is regulated by transcription factors and cytoplasmic proteins that have been shown to abrogate or completely inhibit YY1-mediated activation or repression. For example, it acts as a repressor in absence of adenovirus E1A protein but as an activator in its presence. Acts synergistically with the SMAD1 and SMAD4 in bone morphogenetic protein (BMP)-mediated cardiac-specific gene expression.
Synonyms:	YY1, Delta transcription factor, INO80 complex subunit S, NF-E1, Yin and yang 1, YY-1

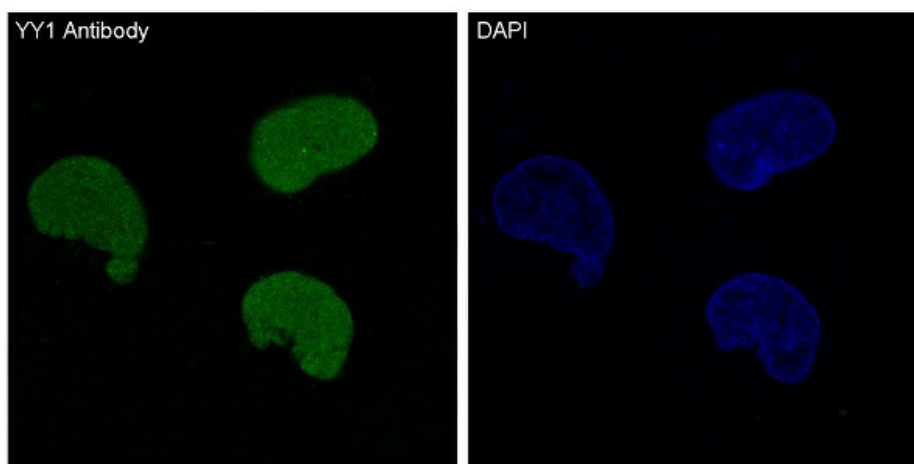


[View online »](#)

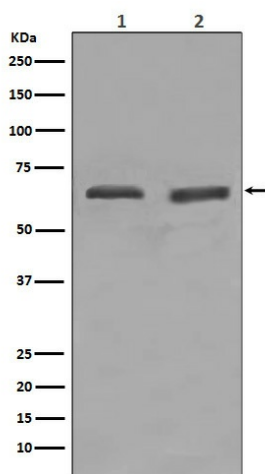
## Product images:



Immunohistochemical analysis of paraffin-embedded human bladder using YY1 Antibody.



Immunofluorescent analysis of HeLa cells, using YY1 Antibody.



Western blot analysis of YY1 expression in (1) HeLa cell lysate; (2) Daudi cell lysate.