

Product datasheet for **TA422267**

Integrin beta 1 (ITGB1) Rabbit Monoclonal Antibody

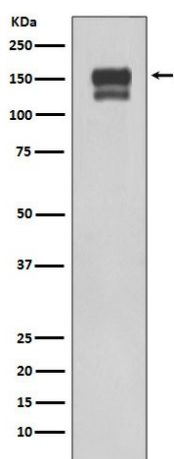
Product data:

Product Type:	Primary Antibodies
Applications:	FC, ICC/IF, IHC, WB
Recommended Dilution:	WB 1:500~1:2000 IHC 1:50~1:200 ICC/IF 1:50~1:200 FC 1:50
Reactivity:	Human
Host:	Rabbit
Isotype:	IgG
Clonality:	Monoclonal
Immunogen:	A synthesized peptide derived from human Integrin beta 1
Specificity:	Integrin beta 1 Antibody detects endogenous levels of total Integrin beta 1
Formulation:	Rabbit IgG in phosphate buffered saline , pH 7.4, 150mM NaCl, 0.02% sodium azide and 50% glycerol.
Concentration:	lot specific
Purification:	Affinity-chromatography
Conjugation:	Unconjugated
Storage:	Store at +4°C short term. Store at -22°C long term. Avoid freeze / thaw cycle.
Predicted Protein Size:	150kDa
Gene Name:	integrin subunit beta 1
Database Link:	Entrez Gene 3688 Human P05556
Background:	Integrins are α/β heterodimeric cell surface receptors that play a pivotal role in cell adhesion and migration, as well as in growth and survival. The integrin family contains at least 18 α and 8 β subunits that form 24 known integrins with distinct tissue distribution and overlapping ligand specificities
Synonyms:	Integrin $\beta 1$, CD29, FN1B, Fibronectin receptor beta subunit, ITB1, Integrin VLA-4 beta subunit, Integrin beta-1 precursor, integrin beta-1



[View online »](#)

Product images:



Western blot analysis of using Integrin beta1 expression in 293T cell lysate.