

Product datasheet for **TA422261**

Collagen I (COL1A1) Rabbit Monoclonal Antibody [Clone ID: OTIRA0080]

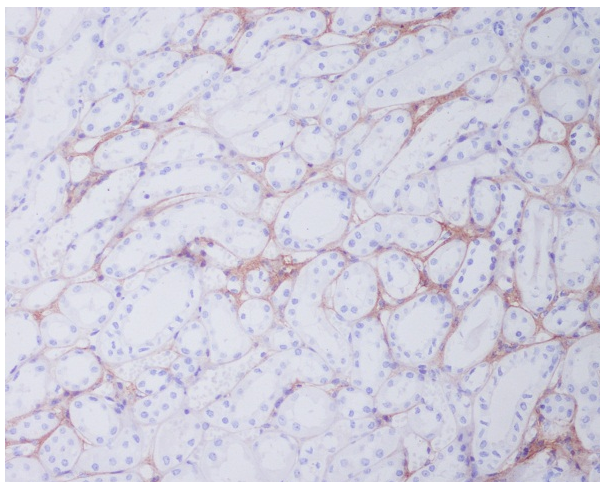
Product data:

Product Type:	Primary Antibodies
Clone Name:	OTIRA0080
Applications:	IHC, WB
Recommended Dilution:	WB:1/1000-2000;IHC:1/100-200
Reactivity:	Human, Cow
Host:	Rabbit
Isotype:	IgG
Clonality:	Monoclonal
Immunogen:	A synthesized peptide derived from human Collagen I
Specificity:	Collagen I Antibody detects endogenous levels of total Collagen I
Formulation:	Rabbit IgG in 10mM phosphate buffered saline , pH 7.4, 150mM sodium chloride, 0.05% BSA, 0.02% sodium azide and 50% glycerol.
Concentration:	lot specific
Purification:	Affinity-chromatography
Conjugation:	Unconjugated
Storage:	Store at +4°C short term. Store at -24°C long term. Avoid freeze / thaw cycle.
Predicted Protein Size:	139kDa
Gene Name:	collagen type I alpha 1
Database Link:	Entrez Gene 1277 Human P08123
Background:	This gene encodes one of the chains for type I collagen, the fibrillar collagen found in most connective tissues. Mutations in this gene are associated with osteogenesis imperfecta, Ehlers-Danlos syndrome, idiopathic osteoporosis, and atypical Marfan syndrome.

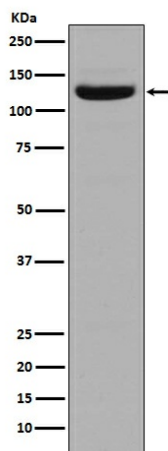


Synonyms: Collagen alpha-1(I) chain, Alpha-1 type I collagen, COL1A1

Product images:



Immunohistochemical analysis of paraffin-embedded human kidney, using Collagen I Antibody.



Western blot analysis of Collagen I in Human stomach tissue lysate.