

Product datasheet for **TA422260**

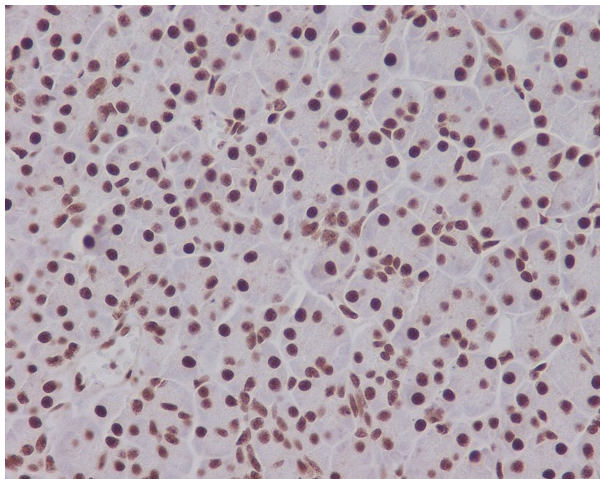
SMAD5 Rabbit Monoclonal Antibody

Product data:

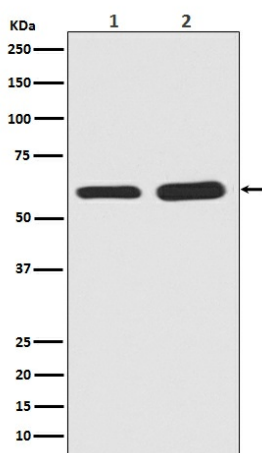
Product Type:	Primary Antibodies
Applications:	ICC/IF, IHC, WB
Recommended Dilution:	WB 1:500~1:2000 IHC 1:50~1:200 ICC/IF 1:50~1:200
Reactivity:	Human, Mouse, Rat
Host:	Rabbit
Isotype:	IgG
Clonality:	Monoclonal
Immunogen:	A synthesized peptide derived from human Phospho-Smad5 (S463/465)
Specificity:	Phospho-Smad5 (S463/465) Antibody detects endogenous levels of total Phospho-Smad5 (S463/465)
Formulation:	Rabbit IgG in phosphate buffered saline , pH 7.4, 150mM NaCl, 0.02% sodium azide and 50% glycerol.
Concentration:	lot specific
Purification:	Affinity-chromatography
Conjugation:	Unconjugated
Storage:	Store at +4°C short term. Store at -24°C long term. Avoid freeze / thaw cycle.
Predicted Protein Size:	58kDa
Gene Name:	SMAD family member 5
Database Link:	Entrez Gene 4090 Human Q99717
Background:	Transcriptional modulator activated by BMP (bone morphogenetic proteins) type 1 receptor kinase. SMAD5 is a receptor-regulated SMAD (R-SMAD). SMAD5 is required for normal development of the cardiovascular system in vivo; lack of the SMAD5 gene results in apoptosis of cardiac myocytes.
Synonyms:	hSmad5; JV5-1; MADH5; MusMLP; SMAD5; SMAD family member 5



[View online »](#)

Product images:


Immunohistochemical analysis of paraffin-embedded human pancreas, using Phospho-Smad5 (S463/465) Antibody.



Western blot analysis of Phospho-Smad5 in (1) Mouse brain tissue lysate; (2) Rat brain tissue lysate.