

Product datasheet for **TA422246**

OLIG2 Rabbit Monoclonal Antibody [Clone ID: OTIRA0065]

Product data:

| | |
|--------------------------------|---|
| Product Type: | Primary Antibodies |
| Clone Name: | OTIRA0065 |
| Applications: | IHC, WB |
| Recommended Dilution: | WB 1:500~1:2000 IHC 1:50~1:200 |
| Reactivity: | Human, Mouse, Rat |
| Host: | Rabbit |
| Isotype: | IgG |
| Clonality: | Monoclonal |
| Immunogen: | A synthesized peptide derived from human Olig2 |
| Specificity: | Olig2 Antibody detects endogenous levels of total Olig2 |
| Formulation: | Rabbit IgG in 10mM phosphate buffered saline , pH 7.4, 150mM sodium chloride, 0.05% BSA, 0.02% sodium azide and 50% glycerol. |
| Concentration: | lot specific |
| Purification: | Affinity-chromatography |
| Conjugation: | Unconjugated |
| Storage: | Store at +4°C short term. Store at -22°C long term. Avoid freeze / thaw cycle. |
| Predicted Protein Size: | 32kDa |
| Gene Name: | oligodendrocyte lineage transcription factor 2 |
| Database Link: | Entrez Gene 10215 Human Q13516 |

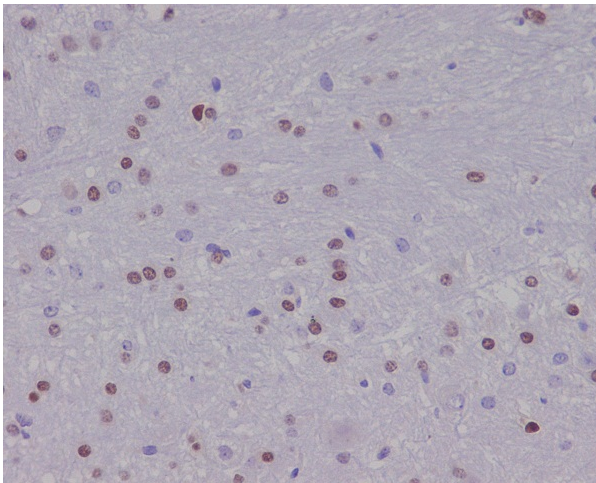


Background:

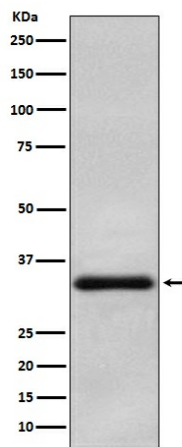
Olig2 is required for oligodendrocyte and motor neuron specification in the spinal cord, as well as for the development of somatic motor neurons in the hindbrain. Cooperates with OLIG1 to establish the pMN domain of the embryonic neural tube. Antagonist of V2 interneuron and of NKX2-2-induced V3 interneuron development.

Synonyms:

bHLHb1; BHLHB1; BHLHE19; bHLHe19; Class E basic helix-loop-helix protein 19; OLIG2; Oligo2; PRKC

Product images:

Immunohistochemical analysis of paraffin-embedded human mouse brain, using Olig2 Antibody.



Western blot analysis of Olig2 in Human oligodendroglioma lysate.