

Product datasheet for **TA422240**

SMAD2 Rabbit Monoclonal Antibody

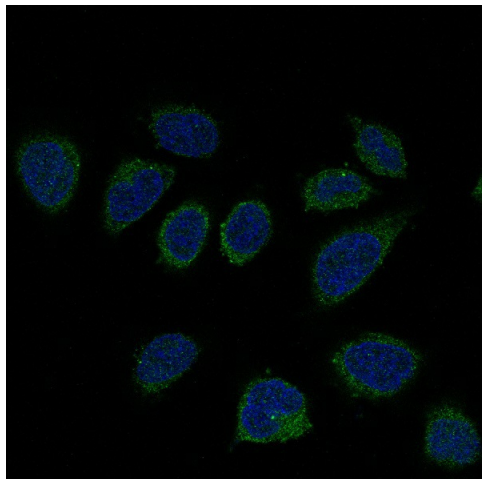
Product data:

Product Type:	Primary Antibodies
Applications:	FC, ICC/IF, WB
Recommended Dilution:	WB 1:500~1:2000 ICC/IF 1:50~1:200 FC 1:50
Reactivity:	Human, Mouse, Rat
Host:	Rabbit
Isotype:	IgG
Clonality:	Monoclonal
Immunogen:	A synthesized peptide derived from human Smad2
Specificity:	Smad2 Antibody detects endogenous levels of total Smad2
Formulation:	Rabbit IgG in phosphate buffered saline , pH 7.4, 150mM NaCl, 0.02% sodium azide and 50% glycerol.
Concentration:	lot specific
Purification:	Affinity-chromatography
Conjugation:	Unconjugated
Storage:	Store at +4°C short term. Store at -24°C long term. Avoid freeze / thaw cycle.
Predicted Protein Size:	58kDa
Gene Name:	SMAD family member 2
Database Link:	Entrez Gene 4087 Human Q15796
Background:	The protein encoded by this gene belongs to the SMAD, a family of proteins similar to the gene products of the Drosophila gene 'mothers against decapentaplegic' (Mad) and the C. elegans gene Sma. SMAD proteins are signal transducers and transcriptional modulators that mediate multiple signaling pathways.
Synonyms:	JV18-1; Mad-related protein 2; MADH2; MADR2; Mothers against DPP homolog 2; Smad 2

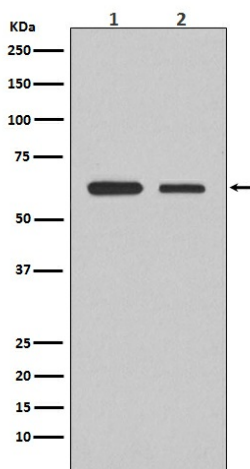


[View online »](#)

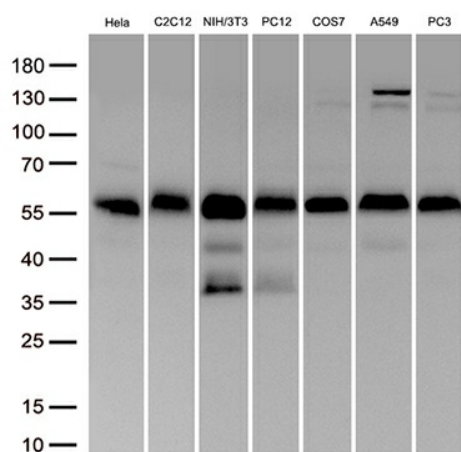
Product images:



Immunofluorescent analysis of HeLa cells, using Smad2 Antibody.



Western blot analysis of Smad2 expression in (1) Jurkat cell lysate;(2) RAW264.7 cell lysate.



Western blot analysis of extracts (50ug) from 7 different cell lines lysates by using anti-Smad2 monoclonal antibody (TA422240, 1:3000; 1mg/ml).