

Product datasheet for **TA422235**

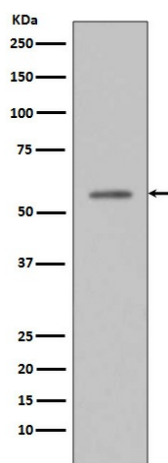
p53 (TP53) Rabbit Monoclonal Antibody

Product data:

| | |
|-------------------------|--|
| Product Type: | Primary Antibodies |
| Applications: | ICC/IF, WB |
| Recommended Dilution: | WB 1:500~1:2000 ICC/IF 1:50~1:200 |
| Reactivity: | Human |
| Host: | Rabbit |
| Isotype: | IgG |
| Clonality: | Monoclonal |
| Immunogen: | A synthesized peptide derived from human Phospho-p53 (S33) |
| Specificity: | Phospho-p53 (S33) Antibody detects endogenous levels of total Phospho-p53 (S33) |
| Formulation: | Rabbit IgG in phosphate buffered saline , pH 7.4, 150mM NaCl, 0.02% sodium azide and 50% glycerol. |
| Concentration: | lot specific |
| Purification: | Affinity-chromatography |
| Conjugation: | Unconjugated |
| Storage: | Store at +4°C short term. Store at -21°C long term. Avoid freeze / thaw cycle. |
| Predicted Protein Size: | 53kDa |
| Gene Name: | tumor protein p53 |
| Database Link: | Entrez Gene 7157 Human P04637 |
| Background: | Tumor protein p53, a nuclear protein, plays an essential role in the regulation of cell cycle, specifically in the transition from G0 to G1. It is found in very low levels in normal cells, however, in a variety of transformed cell lines, it is expressed in high amounts, and believed to contribute to transformation and malignancy. p53 is a DNA-binding protein containing DNA-binding, oligomerization and transcription activation domains. |
| Synonyms: | Cellular tumor antigen p53; Phosphoprotein p53; TP53; Tumor suppressor p53 |


[View online »](#)

Product images:



Western blot analysis of Phospho-p53 (Ser33) in T47D cell lysates treated with etoposide.