

Product datasheet for **TA422209**

MEK1 (MAP2K1) Rabbit Monoclonal Antibody [Clone ID: OTIRA0028]

Product data:

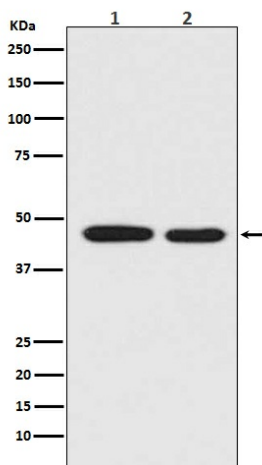
Product Type:	Primary Antibodies
Clone Name:	OTIRA0028
Applications:	FC, ICC, ICC/IF, IHC, IP, WB
Recommended Dilution:	WB:1/1000-2000;IHC:1/100-200;ICC/IF:1/50-200;IP:1/20-50;FC:1/20-100
Reactivity:	Human, Mouse, Rat, Cow, Dog
Host:	Rabbit
Isotype:	IgG
Clonality:	Monoclonal
Immunogen:	A synthesized peptide derived from human MEK1
Specificity:	MEK1 Antibody detects endogenous levels of total MEK1
Formulation:	Rabbit IgG in 10mM phosphate buffered saline , pH 7.4, 150mM sodium chloride, 0.05% BSA, 0.02% sodium azide and 50% glycerol.
Concentration:	lot specific
Purification:	Affinity-chromatography
Conjugation:	Unconjugated
Storage:	Store at +4°C short term. Store at -23°C long term. Avoid freeze / thaw cycle.
Predicted Protein Size:	45kDa
Gene Name:	mitogen-activated protein kinase kinase 1
Database Link:	Entrez Gene 5604 Human Q02750



Background: The protein encoded by this gene is a member of the dual specificity protein kinase family, which acts as a mitogen-activated protein (MAP) kinase kinase. MAP kinases, also known as extracellular signal-regulated kinases (ERKs), act as an integration point for multiple biochemical signals.

Synonyms: ERK activator kinase 1; kinase MEK1; MAP2K1; MAPK/ERK kinase 1; MAP kinase kinase 1; MAPKK 1; MAPKK1; MEK1; MP2K1; PRKMK1

Product images:



Western blot analysis of MEK1 expression in (1) A431 cell lysate;(2) HeLa cell lysate.