

## Product datasheet for **TA422205**

### PARP1 Rabbit Monoclonal Antibody

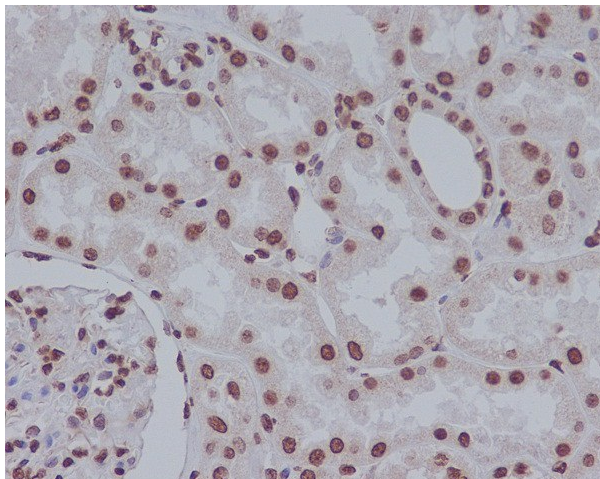
#### Product data:

Product Type:	Primary Antibodies
Applications:	IHC, WB
Recommended Dilution:	WB 1:500~1:2000 IHC 1:50~1:100
Reactivity:	Human, Mouse, Rat
Host:	Rabbit
Isotype:	IgG
Clonality:	Monoclonal
Immunogen:	A synthesized peptide derived from human Cleaved PARP
Specificity:	This antibody is specific for the p25 cleaved form of human PARP.
Formulation:	Rabbit IgG in phosphate buffered saline , pH 7.4, 150mM NaCl, 0.02% sodium azide and 50% glycerol.
Concentration:	lot specific
Purification:	Affinity-chromatography
Conjugation:	Unconjugated
Storage:	Store at +4°C short term. Store at -21°C long term. Avoid freeze / thaw cycle.
Predicted Protein Size:	25kDa
Gene Name:	poly(ADP-ribose) polymerase 1
Database Link:	<a href="#">Entrez Gene 142 Human P09874</a>
Background:	Involved in the base excision repair (BER) pathway, by catalyzing the poly(ADP-ribosyl)ation of a limited number of acceptor proteins involved in chromatin architecture and in DNA metabolism. This modification follows DNA damages and appears as an obligatory step in a detection/signaling pathway leading to the reparation of DNA strand breaks.
Synonyms:	ADPRT; ADPRT1; pADPRT-1; PARP; PARP-1; PPOL

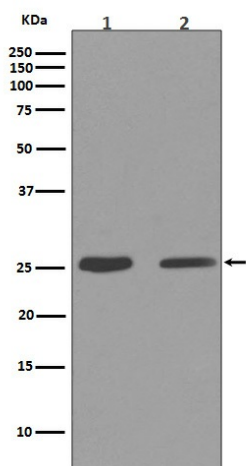


[View online »](#)

## Product images:



Immunohistochemical analysis of paraffin-embedded human kidney, using Cleaved PARP Antibody.



Western blot analysis of Cleaved PARP expression in (1) RAW264.7 cell lysate;(2) NIH/3T3 cell lysate.