

Product datasheet for **TA422202**

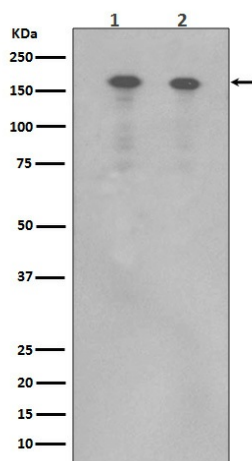
ErbB 4 (ERBB4) Rabbit Monoclonal Antibody

Product data:

Product Type:	Primary Antibodies
Applications:	FC, ICC, IP, WB
Recommended Dilution:	WB 1:500~1:2000 ICC/IF 1:50~1:200 FC 1:40 IP 1:30
Reactivity:	Human, Mouse, Rat
Host:	Rabbit
Isotype:	IgG
Clonality:	Monoclonal
Immunogen:	A synthesized peptide derived from human ErbB4 (HER4)
Specificity:	ErbB4 (HER4) Antibody detects endogenous levels of total ErbB4 (HER4)
Formulation:	Rabbit IgG in phosphate buffered saline , pH 7.4, 150mM NaCl, 0.02% sodium azide and 50% glycerol.
Concentration:	lot specific
Purification:	Affinity-chromatography
Conjugation:	Unconjugated
Storage:	Store at +4°C short term. Store at -20°C long term. Avoid freeze / thaw cycle.
Predicted Protein Size:	160kDa
Gene Name:	erb-b2 receptor tyrosine kinase 4
Database Link:	Entrez Gene 2066 Human Q15303
Background:	The HER4/ERBB4 gene is a member of the type I receptor tyrosine kinase subfamily that includes EGFR (MIM 131550), ERBB2 (MIM 164870), and ERBB3 (MIM 190151). It encodes a receptor for NDF/heregulin (MIM 142445).
Synonyms:	ERBB4; HER4; kinase ErbB4; p180erbB4



[View online »](#)

Product images:

Western blot analysis of ErbB4 (HER4) expression in (1) Human brain lysate; (2) MCF-7 cell lysate.