

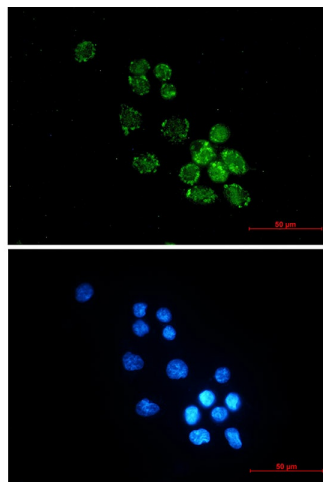
Product datasheet for TA422170

PUS1 Rabbit Monoclonal Antibody [Clone ID: R02-0A2]

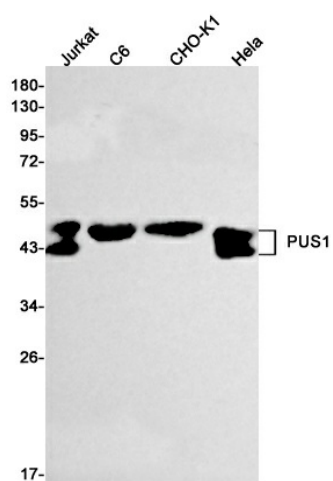
Product data:

Product Type:	Primary Antibodies
Clone Name:	R02-0A2
Applications:	ICC, ICC/IF, IP, WB
Recommended Dilution:	WB:1/500-1000;ICC/IF:1/50-200;IP:1/20
Reactivity:	Human, Hamster, Rat, Mouse
Host:	Rabbit
Isotype:	IgG
Clonality:	Monoclonal
Immunogen:	Recombinant protein of human PUS1
Formulation:	50mM Tris-Glycine(pH 7.4), 0.15M NaCl, 40% Glycerol, 0.01% Sodium azide and 0.05% BSA
Concentration:	lot specific
Purification:	Affinity Purified
Conjugation:	Unconjugated
Storage:	Store at 4°C short term. Aliquot and store at -20°C long term. Avoid freeze/thaw cycles.
Predicted Protein Size:	Calculated MW: 47 kDa; Observed MW: 44,47 kDa
Gene Name:	pseudouridylate synthase 1
Database Link:	Entrez Gene 80324 Human Q9Y606
Synonyms:	MLAS1



Product images:

Immunocytochemistry analysis of PUS1 (green) in MCF-7 using PUS1 antibody, and DAPI(blue)



Western blot analysis of PUS1 in Jurkat, C6, CHO-K1, HeLa lysates using PUS1 antibody.