

Product datasheet for **TA422116**

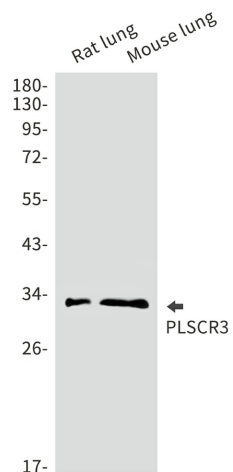
PLSCR3 Rabbit Monoclonal Antibody [Clone ID: R02-1B9]

Product data:

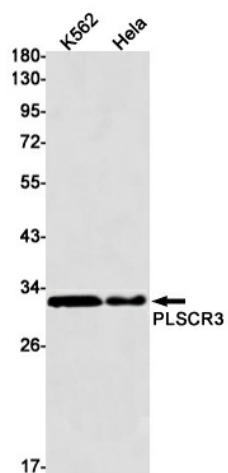
Product Type:	Primary Antibodies
Clone Name:	R02-1B9
Applications:	WB
Recommended Dilution:	WB: 1/500-1/1000
Reactivity:	Human, Mouse, Rat
Host:	Rabbit
Isotype:	IgG
Clonality:	Monoclonal
Immunogen:	A synthetic peptide of human PLSCR3
Formulation:	50mM Tris-Glycine(pH 7.4), 0.15M NaCl, 40% Glycerol, 0.01% Sodium azide and 0.05% BSA
Concentration:	lot specific
Purification:	Affinity Purified
Conjugation:	Unconjugated
Storage:	Store at 4°C short term. Aliquot and store at -20°C long term. Avoid freeze/thaw cycles.
Predicted Protein Size:	Calculated MW: 32 kDa; Observed MW: 32 kDa
Gene Name:	phospholipid scramblase 3
Database Link:	Entrez Gene 57048 Human Q9NRY6
Synonyms:	Phospholipid scramblase 3; PL scramblase 3

[View online »](#)

Product images:



Western blot analysis of PLSCR3 in rat lung, mouse lung lysates using PLSCR3 antibody.



Western blot analysis of PLSCR3 in K562, HeLa lysates using PLSCR3 antibody.