

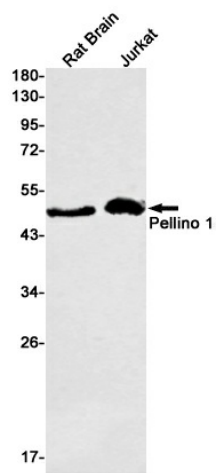
## Product datasheet for **TA422063**

### Pellino 1 (PELI1) Rabbit Monoclonal Antibody [Clone ID: R07-0E3]

#### Product data:

Product Type:	Primary Antibodies
Clone Name:	R07-0E3
Applications:	IP, WB
Recommended Dilution:	WB: 1/500-1/1000 IP: 1/20
Reactivity:	Human, Rat
Host:	Rabbit
Isotype:	IgG
Clonality:	Monoclonal
Immunogen:	Recombinant protein of human Pellino 1
Formulation:	50mM Tris-Glycine(pH 7.4), 0.15M NaCl, 40% Glycerol, 0.01% Sodium azide and 0.05% BSA
Concentration:	lot specific
Purification:	Affinity Purified
Conjugation:	Unconjugated
Storage:	Store at 4°C short term. Aliquot and store at -20°C long term. Avoid freeze/thaw cycles.
Predicted Protein Size:	Calculated MW: 46 kDa; Observed MW: 46 kDa
Gene Name:	pellino E3 ubiquitin protein ligase 1
Database Link:	<a href="#">Entrez Gene 57162 Human Q96FA3</a>
Synonyms:	Pellino-related intracellular-signaling molecule; RING-type E3 ubiquitin transferase pellino homolog 1

[View online »](#)

**Product images:**

Western blot analysis of Pellino 1 in rat Brain, Jurkat lysates using Pellino 1 antibody.