

Product datasheet for **TA422048**

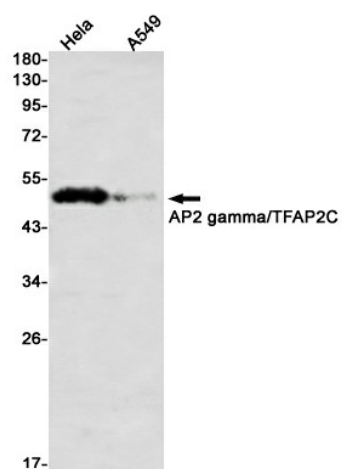
AP2 gamma (TFAP2C) Rabbit Monoclonal Antibody [Clone ID: R01-4D2]

Product data:

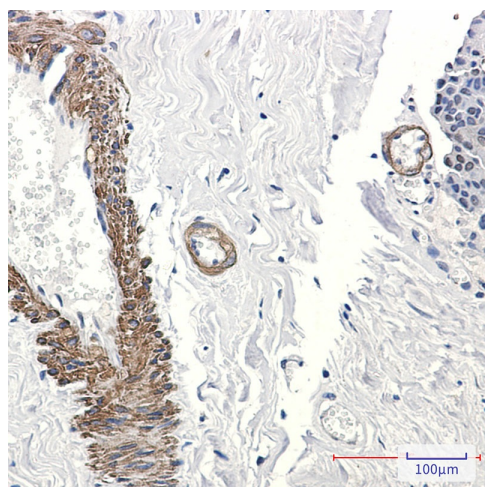
Product Type:	Primary Antibodies
Clone Name:	R01-4D2
Applications:	ICC/IF, IHC, WB
Recommended Dilution:	WB: 1/500-1/1000 IHC: 1/50-1/100 IF: 1/50-1/200
Reactivity:	Human
Host:	Rabbit
Isotype:	IgG
Clonality:	Monoclonal
Immunogen:	A synthetic peptide of human AP2 gamma/TFAP2C
Formulation:	50mM Tris-Glycine(pH 7.4), 0.15M NaCl, 40% Glycerol, 0.01% Sodium azide and 0.05% BSA
Concentration:	lot specific
Purification:	Affinity Purified
Conjugation:	Unconjugated
Storage:	Store at 4°C short term. Aliquot and store at -20°C long term. Avoid freeze/thaw cycles.
Predicted Protein Size:	Calculated MW: 49 kDa; Observed MW: 49 kDa
Gene Name:	transcription factor AP-2 gamma
Database Link:	Entrez Gene 7022 Human Q92754
Synonyms:	AP2-GAMMA; ERF1; hAP-2g; TFAP2G



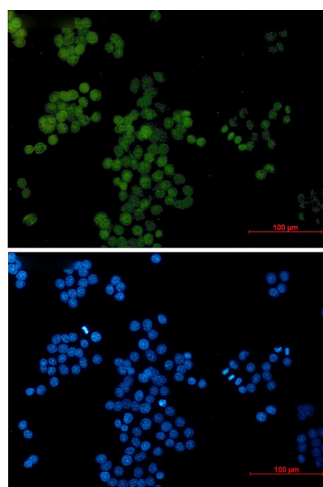
Product images:



Western blot analysis of AP2 gamma/TFAP2C in HeLa, A549 lysates using AP2 gamma/TFAP2C antibody.



Immunohistochemistry analysis of paraffin-embedded Human breast cancer tissue using AP2 gamma/TFAP2C antibody. High-pressure and temperature Sodium Citrate pH 6.0 was used for antigen retrieval.



Immunocytochemistry analysis of Transcription Factor AP 2 gamma (green) in HeLa using Transcription Factor AP 2 gamma antibody, and DAPI (blue).