

Product datasheet for TA422012

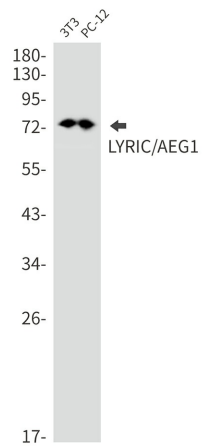
LYRIC (MTDH) Rabbit Monoclonal Antibody [Clone ID: R02-7D4]

Product data:

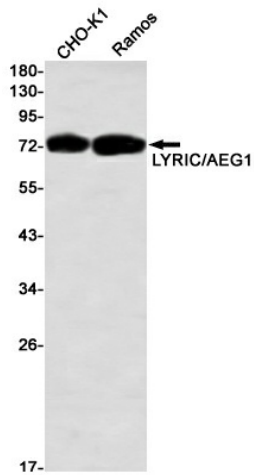
Product Type:	Primary Antibodies
Clone Name:	R02-7D4
Applications:	ICC, ICC/IF, IHC, WB
Recommended Dilution:	WB:1/500-1000;IHC:1/50-100;ICC/IF:1/50-200
Reactivity:	Human, Mouse, Rat, Hamster
Host:	Rabbit
Isotype:	IgG
Clonality:	Monoclonal
Immunogen:	A synthetic peptide of human LYRIC/AEG1
Formulation:	50mM Tris-Glycine(pH 7.4), 0.15M NaCl, 40% Glycerol, 0.01% Sodium azide and 0.05% BSA
Concentration:	lot specific
Purification:	Affinity Purified
Conjugation:	Unconjugated
Storage:	Store at 4°C short term. Aliquot and store at -20°C long term. Avoid freeze/thaw cycles.
Predicted Protein Size:	Calculated MW: 64 kDa; Observed MW: 75 kDa
Gene Name:	metadherin
Database Link:	Entrez Gene 92140 Human Q86UE4
Synonyms:	3D3/LYRIC; AEG-1; AEG1; Astrocyte elevated gene-1 protein; LYRIC; Lysine-rich CEACAM1 co-isolated protein; Metadherin; Metastasis adhesion protein; MTDH; Protein LYRIC



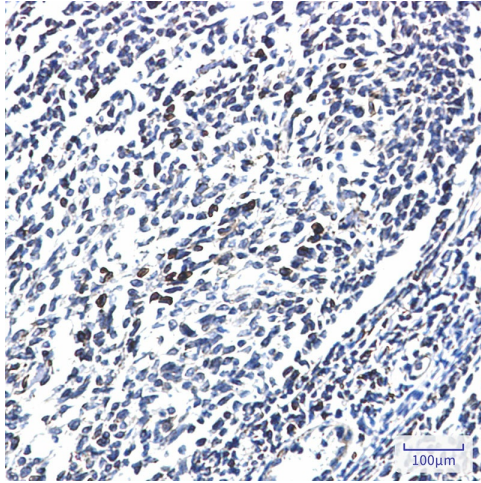
Product images:



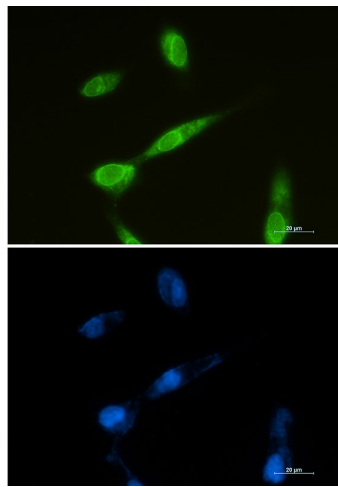
Western blot analysis of LYRIC/AEG1 in 3T3, PC-12 lysates using LYRIC/AEG1 antibody.



Western blot analysis of LYRIC/AEG1 in CHO-K1, Ramos lysates using LYRIC/AEG1 antibody



Immunohistochemistry analysis of paraffin-embedded Human tonsil using LYRIC/AEG1 antibody. High-pressure and temperature Sodium Citrate pH 6.0 was used for antigen retrieval.



Immunocytochemistry analysis of LYRIC (green) in U87-MG using LYRIC antibody, and DAPI (blue).