

Product datasheet for **TA421967**

SMAD1 Rabbit Monoclonal Antibody [Clone ID: R07-4A3]

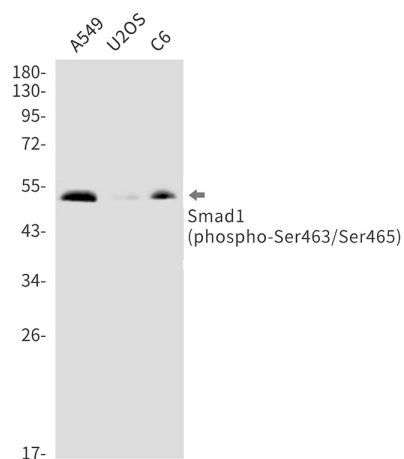
Product data:

Product Type:	Primary Antibodies
Clone Name:	R07-4A3
Applications:	IP, WB
Recommended Dilution:	WB: 1/500-1/1000 IP: 1/20
Reactivity:	Human, Rat
Host:	Rabbit
Isotype:	IgG
Clonality:	Monoclonal
Immunogen:	A synthetic phosphopeptide corresponding to residues surrounding Ser463/Ser465 of human Smad1 (Phosphorylated)
Formulation:	50mM Tris-Glycine(pH 7.4), 0.15M NaCl, 40% Glycerol, 0.01% Sodium azide and 0.05% BSA
Concentration:	lot specific
Purification:	Affinity Purified
Conjugation:	Unconjugated
Storage:	Store at 4°C short term. Aliquot and store at -20°C long term. Avoid freeze/thaw cycles.
Predicted Protein Size:	Calculated MW: 52 kDa; Observed MW: 52 kDa
Gene Name:	SMAD family member 1
Database Link:	Entrez Gene 4086 Human Q15797
Synonyms:	BSP1; hSMAD1; JV4-1; Mad-related protein 1; MADH1; MAD homolog 1; MADR1; Mothers against decapentaplegic homolog 1; Mothers against DPP homolog 1; SMAD 1; SMAD1; Smad1; SMAD family member 1; Transforming growth factor-beta-signaling protein



[View online »](#)

Product images:



Western blot analysis of Phospho-Smad1 (Ser463/Ser465) in A549, U2OS, C6 lysates using Phospho-Smad1 (Ser463/Ser465) antibody.