

Product datasheet for **TA421966**

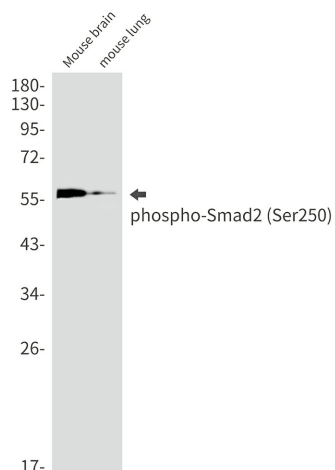
SMAD2 Rabbit Monoclonal Antibody [Clone ID: R02-0D1]

Product data:

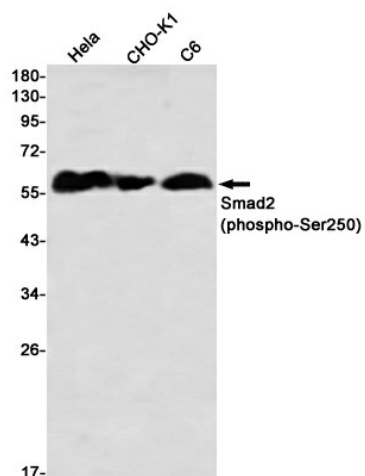
Product Type:	Primary Antibodies
Clone Name:	R02-0D1
Applications:	WB
Recommended Dilution:	WB: 1/500-1/1000
Reactivity:	Human, Mouse, Rat, Hamster
Host:	Rabbit
Isotype:	IgG
Clonality:	Monoclonal
Immunogen:	A synthetic phosphopeptide corresponding to residues surrounding Ser250 of human Smad2 (Phosphorylated)
Formulation:	50mM Tris-Glycine(pH 7.4), 0.15M NaCl, 40% Glycerol, 0.01% Sodium azide and 0.05% BSA
Concentration:	lot specific
Purification:	Affinity Purified
Conjugation:	Unconjugated
Storage:	Store at 4°C short term. Aliquot and store at -20°C long term. Avoid freeze/thaw cycles.
Predicted Protein Size:	Calculated MW: 52 kDa; Observed MW: 58,62 kDa
Gene Name:	SMAD family member 2
Database Link:	Entrez Gene 4087 Human Q15796
Synonyms:	hMAD-2; hSMAD2; JV18-1; Mad-related protein 2; MADH2; MAD homolog 2; MADR2; Mothers against decapentaplegic homolog 2; Mothers against DPP homolog 2; SMAD 2; SMAD2; Smad2; SMAD family member 2


[View online »](#)

Product images:



Western blot analysis of Phospho-Smad2 (Ser250) in mouse brain, mouse lung lysates using Phospho-Smad2 (Ser250) antibody.



Western blot analysis of Smad2 (Phospho-Ser250) in HeLa, CHO-K1, C6 lysates using Smad2 (Phospho-Ser250) antibody.