

Product datasheet for TA421958

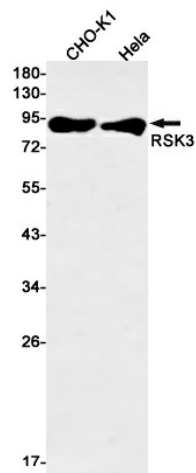
RSK3 (RPS6KA2) Rabbit Monoclonal Antibody [Clone ID: R05-5E4]

Product data:

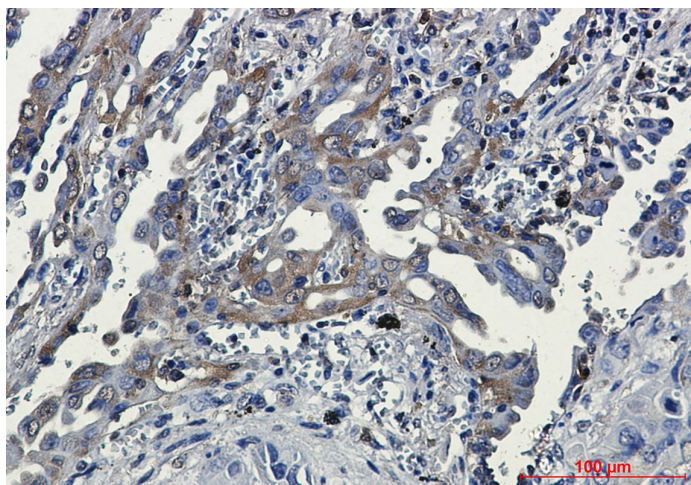
| | |
|--------------------------------|--|
| Product Type: | Primary Antibodies |
| Clone Name: | R05-5E4 |
| Applications: | ICC, ICC/IF, IHC, IP, WB |
| Recommended Dilution: | WB:1/500-1000;IHC:1/50-100;ICC/IF:1/50-200;IP:1/20 |
| Reactivity: | Human, Hamster, Mouse, Rat |
| Host: | Rabbit |
| Isotype: | IgG |
| Clonality: | Monoclonal |
| Immunogen: | A synthetic peptide of human RSK3 |
| Formulation: | 50mM Tris-Glycine(pH 7.4), 0.15M NaCl, 40% Glycerol, 0.01% Sodium azide and 0.05% BSA |
| Concentration: | lot specific |
| Purification: | Affinity Purified |
| Conjugation: | Unconjugated |
| Storage: | Store at 4°C short term. Aliquot and store at -20°C long term. Avoid freeze/thaw cycles. |
| Predicted Protein Size: | Calculated MW: 83 kDa; Observed MW: 90 kDa |
| Gene Name: | ribosomal protein S6 kinase A2 |
| Database Link: | Entrez Gene 6196 Human Q15349 |
| Synonyms: | 90 kDa ribosomal protein S6 kinase 2; MAPK-activated protein kinase 1c; MAPKAPK-1c; MAPKAPK1C; MAPKAP kinase 1c; MAP kinase-activated protein kinase 1c; p90-RSK 2; p90RSK2; Ri; Ribosomal protein S6 kinase alpha-2; RPS6KA2; RSK3; S6K-alpha-2 |



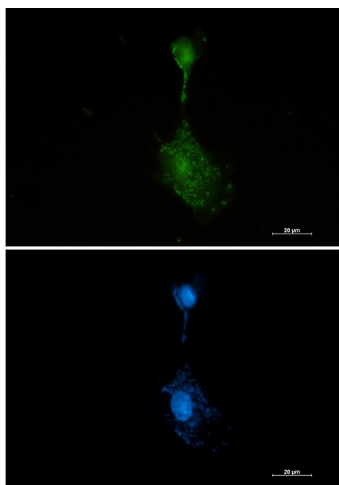
Product images:



Western blot analysis of RSK3 in CHO-K1, HeLa lysates using RSK3 antibody.



Immunohistochemistry analysis of paraffin-embedded Human lung cancer tissue using RSK3 antibody. High-pressure and temperature Sodium Citrate pH 6.0 was used for antigen retrieval.



Immunocytochemistry analysis of RSK3 (green) in U87-MG using RSK3 antibody, and DAPI(blue).