

Product datasheet for **TA421953**

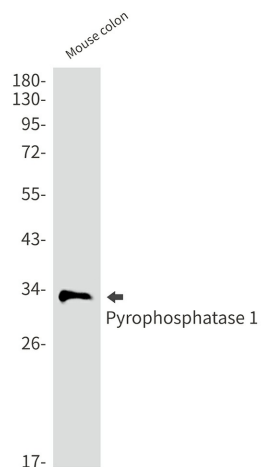
Pyrophosphatase 1 (PPA1) Rabbit Monoclonal Antibody [Clone ID: R01-3E6]

Product data:

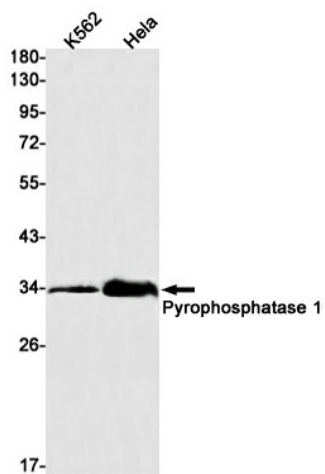
Product Type:	Primary Antibodies
Clone Name:	R01-3E6
Applications:	IP, WB
Recommended Dilution:	WB: 1/500-1/1000 IP: 1/20
Reactivity:	Human, Mouse
Host:	Rabbit
Isotype:	IgG
Clonality:	Monoclonal
Immunogen:	A synthetic peptide of human Pyrophosphatase 1
Formulation:	50mM Tris-Glycine(pH 7.4), 0.15M NaCl, 40% Glycerol, 0.01% Sodium azide and 0.05% BSA
Concentration:	lot specific
Purification:	Affinity Purified
Conjugation:	Unconjugated
Storage:	Store at 4°C short term. Aliquot and store at -20°C long term. Avoid freeze/thaw cycles.
Predicted Protein Size:	Calculated MW: 33 kDa; Observed MW: 33 kDa
Gene Name:	pyrophosphatase (inorganic) 1
Database Link:	Entrez Gene 5464 Human Q15181
Synonyms:	HEL-S-66p; IOPPP; PP; PP1; SID6-8061

[View online »](#)

Product images:



Western blot analysis of Pyrophosphatase 1 in mouse colon lysates using Pyrophosphatase 1 antibody.



Western blot analysis of Pyrophosphatase 1 in K562, HeLa lysates using Pyrophosphatase 1 antibody.