

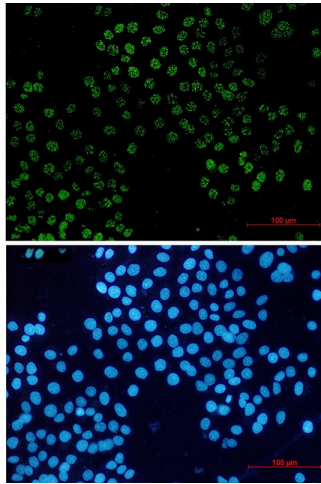
Product datasheet for **TA421939**

FAM50A Rabbit Monoclonal Antibody [Clone ID: R08-2G7]

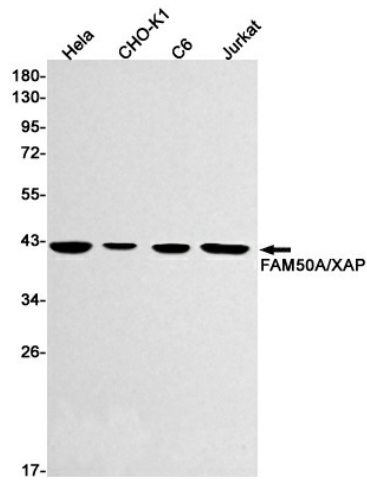
Product data:

Product Type:	Primary Antibodies
Clone Name:	R08-2G7
Applications:	ICC, ICC/IF, IHC, IP, WB
Recommended Dilution:	WB:1/500-1000;IHC:1/50-100;ICC/IF:1/50-200
Reactivity:	Human, Mouse, Rat, Hamster
Host:	Rabbit
Isotype:	IgG
Clonality:	Monoclonal
Immunogen:	A synthetic peptide of human FAM50A
Formulation:	50mM Tris-Glycine(pH 7.4), 0.15M NaCl, 40% Glycerol, 0.01% Sodium azide and 0.05% BSA
Concentration:	lot specific
Purification:	Affinity Purified
Conjugation:	Unconjugated
Storage:	Store at 4°C short term. Aliquot and store at -20°C long term. Avoid freeze/thaw cycles.
Predicted Protein Size:	Calculated MW: 40 kDa; Observed MW: 40 kDa
Gene Name:	family with sequence similarity 50 member A
Database Link:	Entrez Gene 9130 Human Q14320
Synonyms:	9F; DXS9928E; family with sequence similarity 50 member A; HXC-26; HXC26; XAP5

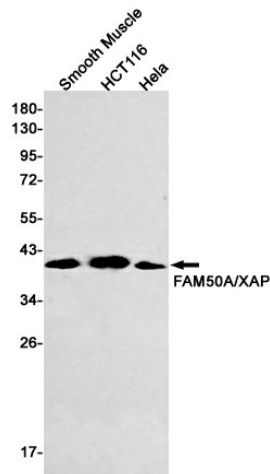


Product images:

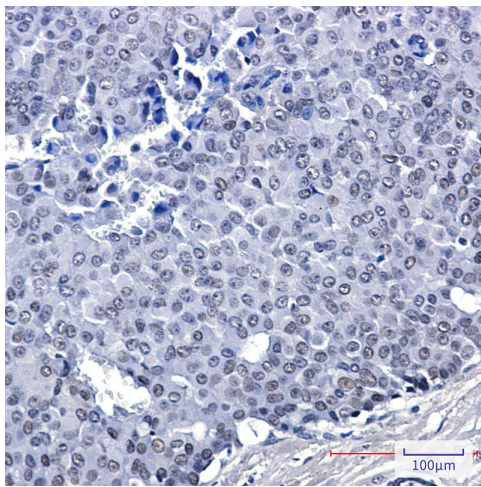
Immunocytochemistry analysis of FAM50A (green) in HeLa using FAM50A antibody, and DAPI (blue).



Western blot analysis of FAM50A/XAP in HeLa, CHO-K1, C6, Jurkat lysates using FAM50A antibody.



Western blot analysis of FAM50A/XAP in Smooth Muscle, HCT116, HeLa lysates using FAM50A/XAP antibody.



Immunohistochemistry analysis of paraffin-embedded Human breast cancer using FAM50A antibody. High-pressure and temperature Sodium Citrate pH 6.0 was used for antigen retrieval.