

Product datasheet for **TA421935**

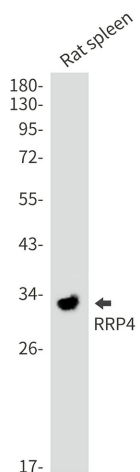
RRP4 (EXOSC2) Rabbit Monoclonal Antibody [Clone ID: R02-7D6]

Product data:

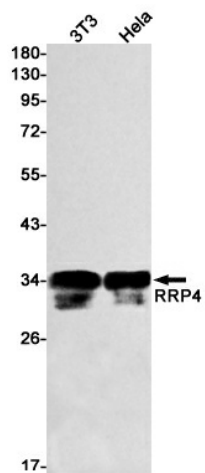
Product Type:	Primary Antibodies
Clone Name:	R02-7D6
Applications:	WB
Recommended Dilution:	WB: 1/500-1/1000
Reactivity:	Human, Mouse, Rat
Host:	Rabbit
Isotype:	IgG
Clonality:	Monoclonal
Immunogen:	A synthetic peptide of human RRP4
Formulation:	50mM Tris-Glycine(pH 7.4), 0.15M NaCl, 40% Glycerol, 0.01% Sodium azide and 0.05% BSA
Concentration:	lot specific
Purification:	Affinity Purified
Conjugation:	Unconjugated
Storage:	Store at 4°C short term. Aliquot and store at -20°C long term. Avoid freeze/thaw cycles.
Predicted Protein Size:	Calculated MW: 33 kDa; Observed MW: 33 kDa
Gene Name:	exosome component 2
Database Link:	Entrez Gene 23404 Human Q13868
Synonyms:	hRrp4p; p7; RRP4; Rrp4p; SHRF

[View online »](#)

Product images:



Western blot analysis of RRP4 in rat spleen lysates using RRP4 antibody.



Western blot analysis of RRP4 in 3T3, HeLa lysates using RRP4 antibody.